

Solar Energy South Africa

Aps mwd system Equatorial Guinea



Aps mwd system Equatorial Guinea

The APS WPR Resistivity Tool Can Be Fully Integrated



WALLINGFORD, CT, USA - April 4, 2024 Did you know that APS Technology's WPR resistivity tool can be fully integrated with any third-party MWD system? Having this integration capability provides customers with a seamless and reliable drilling solution. Contact the APS Technology team (Joe Trapasso, Ron Deady) to learn why customers around the world are [...]

MWD Vibration Isolators , APS TechnologyAPS Technology

BUILT TO LAST APS provides best-in-class MWD Vibration isolation systems. Our patented isolators offer exceptional reliability and low cost of ownership. These systems effectively protect sensitive MWD components from damaging shocks. Our customers tell us that, "APS vibration isolators outlast the OEM isolators by more than a 4-to-1 margin," and that they "have never ...



Home Energy Storage (Stackble system)



- 
High Efficiency
- 
Easy installation
- 
Safe and Reliable
- 
Perfect Compatibility

- Product Introduction**
-  Scalable from 10 kWh to 50 kWh
 -  Self-Consumption Optimization
 -  Integrated with inverter to avoid the compatibility problem
 -  LFP battery, safest and long cycle life
 -  Stackable design for easy installation
 -  Capable of High-Powered
 -  Emergency-Backup and Off-Grid Function

2025 CAN qualifiers: Algeria defeats Equatorial Guinea 2-0

ORAN- The Algerian national football team kicked off their Africa Cup of Nations 2025 for qualifiers with a successful 2-0 victory over Equatorial Guinea on Thursday evening, at the Miloud Hadefi

Standard MWD Mud Pulse

Telemetry System

Gamma depth tracking system (optional)
 Running gear; Surface System. BTR-Touch receiver/display or BTR-W receiver with wireless kit and RDG remote display; MWD software suite; Pressure transducers and support cables; Job Box. Includes all equipment and accessories needed to support your job needs



SureShot MWD System

> The unique APS power management module enables the system to be powered through dual battery packs or a combination of battery power and APS turbine alternator +. * U.S. Patents #6,714,138 and #7,327,634 + U.S. Patent #7,201,239 Printrex Plotter Fixed-mount Pulser SureShot-MP TECHNICAL DATA SHEET Standard APS Surface System

APS MWD ROTARY PULSER

Rotary pulser is the new generation of APS pulser. APS's SureShot(TM) mud pulse family of directional and directional plus gamma systems provide reliable and flexible Measurement While Drilling (MWD) performance in combination with

...



The APS SureShot(TM) Pressure-While-Drilling (PWD)

Captured data can be transmitted in real time via the APS SureShot(TM) MWD/LWD system, or stored in downhole memory for later download and analysis. Real-time data or pressure alarms may be transmitted via SureShot. The APS PWD sensor is available in both probe- and collar-based solutions, and can be integrated to your

existing MWD platform.

TM MWD??

SureShot????????????????????,APS??????
 ??????????????????????SureShot???
 >?????APS?????????????,????????????? ??????????????
 >APS????????????????????????????????

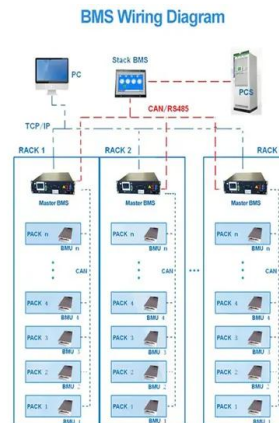


Electromagnetic Telemetry MWD System » SureShot(TM) EM

APS's EM telemetry MWD system has the ability to operate in conditions where mud pulse telemetry cannot. Seamless swap-out with APS mud pulse gear. Electromagnetic Telemetry MWD System » SureShot(TM) EM

Shared MP/EM MWD System Components

SureShot's modular design allows the addition powerful options like high-quality gamma sensor, vibration logging and resistivity. The system can expand from a survey-on connection base system to a full LWD with depth tracking, high data rate decoding, data download, database management and rich log plotting capabilities.



SureShot(TM) EM Telemetry MWD System

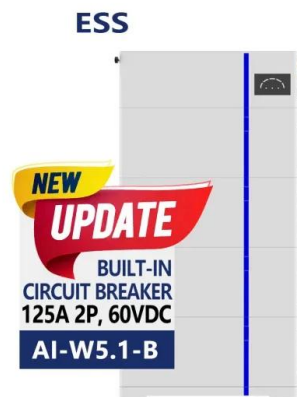
SureShot(TM) EM Telemetry System EM Telemetry The APS EM system communicates by

transmitting electromagnetic waves through the formation instead of pressure pulses through a fluid column. Benefits include time saved by transmitting surveys during a connection, high data rates and the ability to operate in conditions where mud pulse telemetry cannot.



SureShot Power Options , APS Technology

The APS Turbine Alternator+ is a high-temperature, axial flow design for use in measurement-while-drilling (MWD) and logging-while-drilling (LWD) systems. This device provides reliable, ongoing power at temperatures of up to 175°C, taking the place of expensive, short-lived disposable batteries.



[APS SureShot MWD System](#)

TM MWD System DrilPro's SureShot family of directional and directional plus gamma systems provides reliable and flexible measurement-while-drilling performance in combination with our second-generation Rotary Pulser. The system can be powered by our battery modules, our turbine alternator, or a combination of the two. This MWD system provides

[SureShot-MP\(TM\)](#)

MWD rotary pulser - mud pulse transmitter APS's SureShot(TM) mud pulse family of directional and directional plus gamma systems provides reliable and flexible Measurement While Drilling (MWD) performance in combination with our second-generation Rotary Pulser - the toughest top-mounted pulser in the industry. This MWD

system provides highly accurate azimuth and ...

Support Customized Product

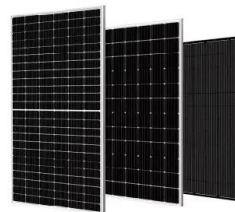


[?????? APS??????MWD????-???](#)

September 1, 2015 - APS Technology's SureShot(TM) EM MWD System has successfully transmitted from a depth of 10,104 feet (3,080 m) total vertical depth (TVD) in a Canadian well in oil-based mud (OBM). This is the deepest transmission to date for the APS EM system, marking an impressive achievement for EM tools in general.

[APS Technology](#)

28-Sep-15 - APS Announces the Addition of Azimuthal Gamma (AZG) LWD; 1-Sep-15 - EM MWD System Transmits from 10,104 ft. (3,080 m) TVD in OBM; 29-May-15 - APS Announces Further Successful Testing of SureSteer(TM) 475-rss Rotary Steerable System; 05-May-15 - EM Telemetry System Complements Well-established APS Mud Pulse MWD/LWD Products



SureShot-DDS , APS TechnologyAPS Technology

MWD DIGITAL DIRECTIONAL SENSOR This MWD system provides highly accurate azimuth and inclination data for all applications from straight-hole through horizontal drilling. The DDS includes a tri-axial fluxgate magnetometer and three quartz accelerometers in APS's unique

ruggedized package. Simultaneous 16-bit analog-to-digital conversion of all channels assures the best ...



Contact Us

For catalog requests, pricing, or partnerships, please visit:
<https://ian-solar.co.za>