

Solar Energy South Africa

Bess definition battery Equatorial Guinea



 **TAX FREE**    

ENERGY STORAGE SYSTEM

Product Model
HJ-ESS-215A(100KW/215KWh)
HJ-ESS-115A(50KW 115KWh)

Dimensions
1600*1280*2200mm
1600*1200*2000mm

Rated Battery Capacity
215KWH/115KWH

Battery Cooling Method
Air Cooled/Liquid Cooled



The image shows a tall, grey, rectangular battery unit with a black top and bottom. It features two vertical green stripes running down the center. In the middle, there is a blue hexagonal shape with two black arrows pointing downwards. The letters 'ESS' are printed in green on the upper right side. At the bottom, there are two yellow triangular warning symbols with a lightning bolt inside.

Overview

A battery energy storage system (BESS), battery storage power station, battery energy grid storage (BEGS) or battery grid storage is a type of energy storage technology that uses a group of batteries in the grid to store electrical energy. Battery storage is the fastest responding dispatchable source of power on electric grids, and it is used to stabilise those grids, as. A battery energy storage system (BESS), battery storage power station, battery energy grid storage (BEGS) or battery grid storage is a type of energy storage technology that uses a group of batteries in the grid to store electrical energy. Battery storage is the fastest responding dispatchable source of power on electric grids, and it is used to stabilise those grids, as battery storage can transition from standby to full power in under a second to deal with grid contingencies. Battery energy storage systems are generally designed to be able to output at their full rated power for several hours. Battery storage can be used for short-term peak power and ancillary services, such as providing operating reserve and frequency control to minimize the chance of power outages. They are often installed at, or close to, other active or disused power stations and may share the same grid connection to reduce costs. Since battery storage plants require no deliveries of fuel, are compact compared to generating stations and have no chimneys or large cooling systems, they can be rapidly installed and placed if necessary within urban areas, close to customer load, or even inside customer premises. As of 2021, the power and capacity of the largest individual battery storage system is an order of magnitude less than that of the largest pumped-storage power plants, the most common form of grid energy storage. For example, the Bath County Pumped Storage Station, the second largest in the world, can store 24 GWh of electricity and dispatch 3 GW while the first phase of Vistra Energy's Moss Landing Energy Storage Facility can store 1.2 GWh and dispatch 300 MW. However, grid batteries do not have to be large, a large number of smaller ones (often as Hybrid power) can be widely deployed across a grid for greater redundancy and large overall capacity. As of 2019, battery power storage is typi.

Battery storage power plants and (UPS) are comparable in technology and function. However, battery storage power plants are larger. For safety and security, the actual batteries are housed in their own structures, like warehouses or containers. As with a UPS, one concern is that electrochemical energy is stored or emitt. Battery storage power plants and (UPS) are comparable in technology and function. However, battery storage power plants are larger. For safety and security, the actual batteries are housed in

their own structures, like warehouses or containers. As with a UPS, one concern is that electrochemical energy is stored or emitted in the form of (DC), while electric power networks are usually operated with (AC). For this reason, additional are needed to connect the battery storage power plants to the high voltage network. This kind of power electronics include , commonly used in (HVDC) transmission. Various accumulator systems may be used depending on the power-to-energy ratio, the expected lifetime and the costs. In the 1980s, lead-acid batteries were used for the first battery-storage power plants. During the next few decades, nickel-cadmium and sodium-sulfur batteries were increasingly used. Since 2010, more and more utility-scale battery storage plants rely on lithium-ion batteries, as a result of the fast decrease in the cost of this technology, caused by the electric automotive industry. are mainly used. A 4-hour at 175MW/700MWh opened in 2024. are still used in small budget applications.

Most of the BESS systems are composed of securely sealed , which are electronically monitored and replaced once their performance falls below a given threshold. Batteries suffer from cycle ageing, or deterioration caused by charge-discharge cycles. This deterioration is generally higher at and higher . Most of the BESS systems are composed of securely sealed , which are electronically monitored and replaced once their performance falls below a given threshold. Batteries suffer from cycle ageing, or deterioration caused by charge-discharge cycles. This deterioration is generally higher at and higher . This aging cause a loss of performance (capacity or voltage decrease), overheating, and may eventually lead to critical failure (electrolyte leaks, fire, explosion). Sometimes battery storage power stations are built with in order to conserve battery power. Flywheels may handle rapid fluctuations better than older battery plants. BESS typically include lifetime limits on energy throughput, expressed as number of charge-discharge cycles. Lead-acid based batteriesLead-acid batteries are first generation batteries are generally used in older BESS systems. Some examples are 1.6 MW peak, 1.0 MW continuous battery was commissioned in 1997. Compared to modern rechargeable batteries, lead-acid batteries have relatively low . Despite this, they are able to supply high . However, non-sealed produce hydrogen and oxygen from the aqueous electrolyte when overcharged. The water has to be refilled regularly to avoid damage to the battery; and, the inflammable gases have to be vented out to avoid explosion risks. However, this maintenance has a cost, and recent batteries such as .

Since they do not have any mechanical parts, battery storage power plants offer extremely short control times and start times, as little as 10 ms. They can therefore help dampen the fast oscillations that occur when electrical power networks are operated close to their maximum capacity or when grids

suffer anomalies. These instabilities – fluctuations with periods of as little as 10 ms. Since they do not have any mechanical parts, battery storage power plants offer extremely short control times and start times, as little as 10 ms. They can therefore help dampen the fast oscillations that occur when electrical power networks are operated close to their maximum capacity or when grids suffer anomalies. These instabilities – fluctuations with periods of as much as 30 seconds – can produce peak swings of such amplitude that they can cause regional blackouts. Some of the parameters are voltage, frequency and phase. A properly sized battery storage power plant can efficiently counteract these oscillations; therefore, applications are found primarily in those regions where electrical power systems are operated at full capacity, leading to a risk of instability. However, some batteries have insufficient control systems, failing during moderate disruptions they should have tolerated. Batteries are also commonly used for for periods of up to a few hours. A more recent use is strengthening transmission, as long power lines can be operated closer to their capacity when batteries handle the local difference between supply and demand. Storage plants can also be used in combination with an intermittent renewable energy source in .

While the market for grid batteries is small compared to the other major form of grid storage, pumped hydroelectricity, it is growing very fast. For example, in the United States, the market for storage power plants in 2015 increased by 243% compared to 2014. The 2021 price of a 60MW / 240MWh (4-hour) battery installation in the United States was US\$379/usable kWh, or US\$292/nameplate kWh, a 13% drop from 2020. In 2010, the United States had 59 MW of battery storage capacity from 7 battery power plants. This increased to 49 plants comprising 351 MW of capacity in 2015. In 2018, the capacity was 869 MW from 125 plants, capable of storing a maximum of 1,236 MWh of generated electricity. By the end of 2020, the battery storage capacity reached 1,756 MW. At the end of 2021, the capacity grew to 4,588 MW. In 2022, US capacity doubled to 9 GW / 25 GWh. As of May 2021, 1.3 GW of battery storage was operating in the United Kingdom, with 16 GW of projects in the pipeline potentially deployable over the next few years. In 2022, UK capacity grew by 800 MWh, ending at 2.4 GW / 2.6 GWh. Europe added 1.9 GW, with several more projects planned. In 2020, China added 1,557 MW to its battery storage capacity, while storage.

-

A battery energy storage system (BESS), battery storage power station, battery energy grid storage (BEGS) or battery grid storage is a type of energy storage technology that uses a group of batteries in the grid to store electrical energy.

A battery energy storage system (BESS), battery storage power station, battery energy grid storage (BEGS) or battery grid storage is a type of energy storage technology that uses a group of batteries in the grid to store electrical energy.

Definition. Battery Energy Storage Systems (BESS) are technologies that store electrical energy for use at a later time, typically using batteries. These systems play a vital role in balancing supply and demand in energy networks, allowing for greater integration of renewable energy sources and enhancing grid reliability and stability.

In this course, we will explore the world of BESS, starting from the basics and progressing to advanced concepts. We will delve into the various types of energy storage systems, focusing particularly on lithium-ion batteries, which are rapidly becoming the standard for energy storage.

Battery Energy Storage Systems (BESS) are pivotal technologies for sustainable and efficient energy solutions. This article provides a comprehensive exploration of BESS, covering fundamentals, operational mechanisms, benefits, limitations, economic considerations, and applications in residential, commercial and industrial (C&I), and utility .

Battery storage systems, or Battery Energy Storage Systems (BESS), store energy for later use, ensuring a steady supply during periods of high demand or when renewable energy generation fluctuates. Dominated by lithium-ion technology, these systems are essential for integrating renewable energy sources like solar and wind into the power grid. Emerging technologies such as thermal and mechanical . What is Bess & how does it work?

BESS can be used for a variety of applications, including grid stabilisation, load shifting, backup power, and integration with renewable energy sources such as solar and wind power. BESS typically consists of a battery bank, power conversion systems, and control systems that manage the charging and discharging of the batteries.

Are Bess batteries toxic?

Certain BESS batteries may contain toxic or hazardous materials, posing

significant environmental and health risks if not managed or disposed of correctly. This highlights the need for stringent disposal and recycling protocols to mitigate potential negative environmental and public health impacts. 5. Energy Conversion Losses.

What is a Bess control system?

Also enhancing grid supplies with frequency support or power factor correction. BESS control systems are incredibly important as they impact the efficiency of a power package. The level of controls required depends on the complexity and purpose of a project. Here is an overview of the controllers integrated into a project.

Are lithium-ion batteries good for Bess?

Although certain battery types, such as lithium-ion, are renowned for their durability and efficiency, others, such as lead-acid batteries, have a reduced lifespan, especially when subjected to frequent deep cycling. This variability in endurance can pose challenges in terms of long-term reliability and performance in BESS. 4.

What is Bess cycle rate & Max charging current?

BESS cycle rate: how many times the BESS cycles each day (fully charges and discharges). Max charging current: the maximum charging current for a BESS is determined by battery capacity, chemistry, and the charger or inverter used in the system.

Bess definition battery Equatorial Guinea



EDF Renewables secures PPA for 250MW Arizona BESS project

EDF Renewables North America has entered a 20-year power purchase agreement (PPA) with Arizona Public Service (APS) for a 1,000 megawatt hours (MWh) energy storage project in Arizona, US.. The Beehive battery energy storage system (BESS) in Peoria, Maricopa County, will be a stand-alone system with a 250MW capacity for a four-hour duration.

Was ist ein Batterie-Energiespeichersystem (BESS)?

Batterie-Energiespeichersystem (BESS) verstehen. A Batterie-Energiespeichersystem (BESS) ist eine fantastische Innovation, die Ihnen hilft, Energie in Form von Strom zu speichern und zu verteilen. Also, wie funktioniert es? Stellen Sie sich die Batterie vor, die in einer Taschenlampe verwendet wird, aber in viel größerem Maßstab.

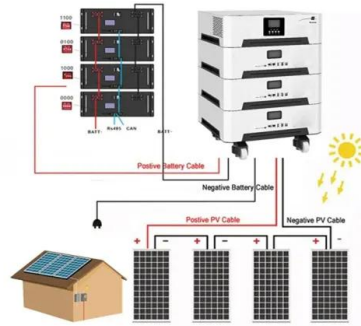


Energy Vault partners Enervest for 1GWh BESS in Australia

Energy Vault Holdings has entered an agreement with the Enervest Group to deploy a 1 gigawatt-hour battery energy storage system (BESS) at the Stoney Creek site in New South Wales (NSW), Australia. The collaboration is a significant move towards enhancing grid reliability and supporting the state's renewable energy expansion.

Wärtsilä to deliver 150MW BESS to Amp Energy in Australia

Wärtsilä has secured a contract to deliver 150MW battery energy storage system (BESS) to Amp Energy in South Australia. The standalone system, with a 300MWh capacity, is expected to bolster the energy security and reliability amidst the state's increasing reliance on renewable energy sources.



Battery storage definitions: a glossary of BESS terminology

Battery basics. BESS - Battery Energy Storage System. Rechargeable battery that stores power provided from various energy sources for later use. The system can be discharged as needed for grid support and backup power. Grid/power grid/electricity grid. Network of power lines for the transmission and distribution of energy over a geographical area.

Was bedeutet BESS? Batterie-Energiespeichersysteme ...

BESS kann überschüssige Energie aus erneuerbaren Quellen wie Sonne und Wind speichern und bei Bedarf freigeben. Dies trägt dazu bei, die Variabilität der Produktion erneuerbarer Energien auszugleichen und eine ...



Vertiv(TM) DynaFlex Battery Energy Storage System

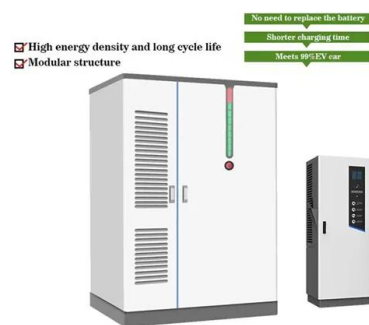
Vertiv(TM) DynaFlex is a battery energy storage system (BESS) which is a key element to



providing an "always-on" hybrid energy solution. The Vertiv DynaFlex BESS helps organizations increase power reliability, strengthen operational resilience, and reduce Opex spending and carbon emissions. If used with Vertiv(TM) DynaFlex EMS, the Vertiv DynaFlex enables other distribution ...

Key battery cell technology advances for the BESS industry

Callum McGuinn, partner at European intellectual property (IP) firm Mewburn Ellis, rounds up the major advancements in battery cell technology that BESS industry sources should be aware of. Advancements in battery technologies are highly significant for the large-scale energy storage systems (ESS) industry. Key developments to monitor include



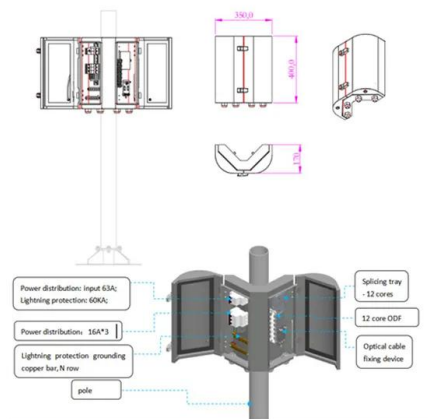
What is a Battery Energy Storage System (BESS)?

A Battery Energy Storage System (BESS) is a system that uses batteries to store electrical energy. They can fulfill a whole range of functions in the electricity grid or the integration of renewable energies. We explain the components of a ...

WEG Supplies Battery Energy Storage System (BESS) for the City ...

The project aims to increase the resilience of the city's transmission network, reducing dependence on energy supply from other

locations, and meeting demand during the peak tourism season.

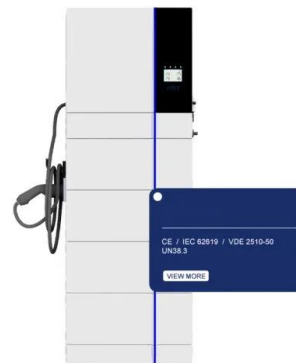


[Battery energy storage system](#)

Tehachapi Energy Storage Project, Tehachapi, California. A battery energy storage system (BESS), battery storage power station, battery energy grid storage (BEGS) or battery grid storage is a type of energy storage technology ...

ACT government and Eku begin Williamsdale BESS construction

The project will play a crucial role in the ACT's transition to renewable energy and achieving net-zero emissions by 2045. Credit: Phonlamai Photo/Shutterstock. The Australian Capital Territory (ACT) government and Eku Energy have officially commenced construction of the Williamsdale Battery



Uniper partners NGEN to build BESS project in Germany

German energy company Uniper has partnered with NGEN to construct a 50MW/100 megawatt hours (MWh) battery energy storage system (BESS) project in the state of North Rhine-Westphalia. The new project, set to begin operation in 2025, will be constructed at the

Heyden power plant site in Petershagen.



California introduces fire safety rules around battery ...

Inauguration of the Elkhorn BESS by utility PG& E in April 2022, a few months before an overheating incident took it temporarily offline. Image: PG& E video on . New legislation in California that requires ...



Battery Energy Storage Systems (BESS): A Complete Guide

Introduction to Battery Energy Storage Systems (BESS) Battery Energy Storage Systems (BESS) are rapidly transforming the way we produce, store, and use energy. These systems are designed to store electrical energy in batteries, which can then be deployed during peak demand times or when renewable energy sources aren't generating power, such



Optimising IoT for Efficient Battery Energy Storage Systems

Creating a connected IoT infrastructure is crucial for improving the efficiency, security and resilience of a Battery Energy Storage System

(BESS). However, achieving these ambitions requires the integration of many carefully selected hardware and software components, including I/O gateways, edge protocol gateways, edge computers and software.



What is a BESS Battery Energy Storage System?

A battery energy storage system, or BESS, is an electrical grid component consisting of one or more batteries. Like a reservoir that draws water from multiple rivers, battery energy storage systems are capable of storing ...

Battery Energy Storage System guide to Contingency FCAS ...

A Battery Energy Storage System (BESS) is capable of providing a contingency FCAS response using one of two methods: (a) Via a variable controller, where it varies its active power when the local frequency Term Definition Frequency Deviation Setting The setting allocated to an Ancillary Service Facility by AEMO within the range



The Ultimate Guide to Battery Energy Storage Systems ...

Battery Energy Storage Systems (BESS) are pivotal technologies for sustainable and efficient energy solutions. This article provides a comprehensive exploration of BESS, covering fundamentals, operational ...



Battery Energy Storage System (BESS)

These cookies allow us to collect and analyze traffic and use of the website on an anonymous basis and to understand and improve how visitors use the website, including which pages and products are viewed most frequently.



Evolution-of-the-battery-energy-storage-system-bess ...

In conclusion, the strategic imperatives discussed are guiding the evolution of the battery energy storage system (BESS) industry. From advancements in clean energy technologies to innovations in energy storage ...

Battery Energy Storage System (BESS)

Vertiv's BESS solution is optimized for mission-critical facilities. Our full-featured PCS--fast acting in 2ms--and the latest li-ion batteries, supports your sustainability goals and improves uptime. Switchgear and Switchboard Busway and Busduct Battery Energy Storage System (BESS) Thermal Management. Overview





Système de stockage d'énergie par batterie (BESS)

La signification de BESS. BESS signifie battery energy storage system et est un système qui utilise des batteries électrochimiques pour convertir l'énergie électrique en énergie chimique pendant la phase de charge et, ensuite, la reconvertir en énergie électrique pendant la phase de décharge.. Ces systèmes sont renommés pour leur capacité à répondre rapidement ...

Evolution-of-the-battery-energy-storage-system-bess-industry

In conclusion, the strategic imperatives discussed are guiding the evolution of the battery energy storage system (BESS) industry. From advancements in clean energy technologies to innovations in energy storage and management, these developments are transforming the BESS landscape. This progress promises a future where efficient, reliable, ...



Contact Us

For catalog requests, pricing, or partnerships, please visit:
<https://ian-solar.co.za>