

Solar Energy South Africa

Calculation rules for the span of photovoltaic panel brackets



Overview

What is the difference between a solar panel and a roof mounting system?

Solar panel - this document uses the term solar panels as a collective term for solar thermal collectors and PV modules. Roof mounting system - a collection of parts or components designed to mount solar panels on the roof of a building.

How do solar PV brackets work?

The brackets form a simple, fast framing system for steel-framed roofs; solar PV modules are mounted in landscape format at either 5° or 15° above the roof sheet, using brackets on a SunLock channel. The channel forms a conduit for cabling. The brackets are backed by a 10-year warranty.

How do I choose a solar panel mounting system?

Whether it's a flat commercial rooftop or a pitched residential roof, the material—be it metal, tile, or asphalt—will dictate the appropriate mounting system. Solar Panel Specifications: The size, weight, and configuration of the solar panels must be compatible with the mounting system to ensure a secure installation.

What are the requirements for a solar panel installation?

Solar Panel Specifications: The size, weight, and configuration of the solar panels must be compatible with the mounting system to ensure a secure installation. Climatic Conditions: Environmental factors such as wind, snow, and seismic activity must be taken into account to ensure the system can withstand local conditions.

What is a good load value for a solar mounting system?

a load value no less than 1.0kN/m² (See Note (ii)) for a mounting system. Where testing an individual roof bracket/hook then the load value shall be no less than 0.25kN. the load being considered is the combined static weight/load

of the solar mounting system, solar panels, and snow.

Do solar panels need a maximum design wind uplift resistance?

7.4 Solar panels may be required to facilitate testing of mounting systems or individual components. A Maximum Design Wind Uplift Resistance shall be determined and declared when assessed in accordance with Appendix A1. The value is declared in Kilopascals (kPa) for mounting systems, or Kilonewtons (kN) for individual components.

Calculation rules for the span of photovoltaic panel brackets



[Know your codes for solar mounting](#)

Building codes (IBC), fire codes (IFC) and structural engineering codes (ASCE) also come into play when adding solar to an existing structure. Here are a few codes all solar installers should be familiar with when working ...

[How to Calculate Solar Panel Tilt Angle](#)

Use Renogy's adjustable solar panel tilt mount brackets to properly orient the panels at the perfect pitch for your site's solar access and roof and ensure maximum energy production. Determining how to calculate ...



- High energy density and long cycle life
- Modular structure



- No need to replace the battery every year
- Shorter charging time
- Meets 40% IZV cost

[Photovoltaic \(PV\) Solar Panels](#)

The life expectancy of a PV panel is likely to be 30 years or longer though there will likely be some cosmetic physical decay and a decrease in energy output. Crystalline silicon PV panels should come with a 'power output warranty'. This ...

[Solar Photovoltaic \(PV\) panels](#)

Fixing the first panel on the rails requires extra care. If it's not exactly at right-angles to the rails, each successive panel will progressively slew out of line. panels are clamped to the rail, leaving an 18mm inter-panel gap. ...



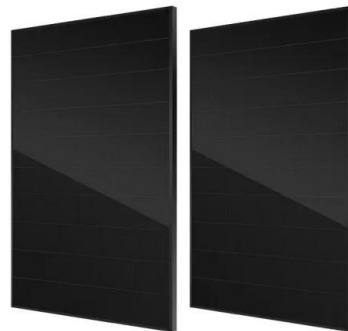
Mounting Solar Modules and Estimating Parts

Estimating the number and size of rails, mid and end clamps, L-feet, or standoffs for your solar installation could be troublesome. This brief introduction offers insight into estimating the number of solar racking parts a project might need.



Solar Panel Roof Mounts , Solar Panel Racking ...

Discover S-5!'s solar panel roof mounts and solar racking systems, built to last as long as your PV modules. The PVKIT is mounted to S-5! clamps and brackets according to roof type. upon you, govern your use of this site and any ...



Best Practice: Solar Roof Mounting System Design and ...

Load Calculations: Proper engineering requires accurate calculations of the loads the system will need to bear, including the weight of the panels and environmental loads such as wind and snow. Energy Yield ...

[Solar Panel Cost Calculator UK](#)

Solar panel brackets. Solar panel inverter. Solar panel brackets. Installation i.e. labour costs of the installer. Cost of the solar battery storage system (although this is optional). Short answer: the average UK cost of a new ...



Contact Us

For catalog requests, pricing, or partnerships, please visit:
<https://ian-solar.co.za>