

Solar Energy South Africa

Can photovoltaic panels be installed in the morning



Overview

No. Solar panels don't need direct sunlight to harness energy from sun, they just require some level of daylight in order to generate electricity. How to install solar panels?

Make space for the solar panel accessories (solar inverter, cables and solar batteries, if desired), for instance in a plant room 4. Plan a day for installation 5. Erect the scaffolding (this can be done by your supplier or by a company you organise) 6. The solar panel mounts will be installed 7. The professionals will install the solar panels 8.

What if I have solar panels installed before 31 March 2019?

If you had solar panels installed before 31 March 2019, it's likely you'll be on a feed-in tariff (FIT). If so, you might already be getting paid more than what's below, but if you're currently on a variable SEG tariff, you're free to switch to another provider that'll pay you more.

Can solar panels be installed on a roof?

"The solar panels will need to be mounted on the roof by installers who understand roofing and will need some scaffold decks to safely get the panels to the roof.

Do you need planning permission to install solar panels?

Homeowners with flat roofs used to need planning permission to install solar panels, but in December 2023 the government changed its 'permitted development' rules. This made it easier for more homes to have solar panels, including those with flat roofs.

Can solar panels be mounted on a flat roof?

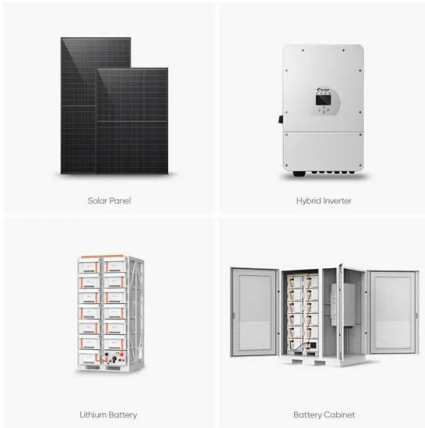
For solar panels on a flat roof, mounting systems are slightly different and can include a triangle 'ballast' box to support the panels. For solar thermal panels (with cells that use the sun's heat to warm water in a house) things are a little

different.

Are bifacial solar panels better than ground-mounted solar panels?

There are loads of benefits to ground-mounted solar panels, the biggest one being that they can generate as much as 35% more energy than roof-mounted solar panels, as achieving the best angle and direction is easier when no roof is in the way. Bifacial solar panels allow you to generate energy on both sides, which means more energy and money saved.

Can photovoltaic panels be installed in the morning



How much electricity do solar panels produce?

The sun rises in the east and so east-facing PV panels will have maximum generation part-way through the morning. A west-facing array will tend to generate most electricity part-way through the afternoon as shown to the right. ...

What Solar Panel Orientation is best in the UK?

If even one panel is shaded it will reduce the output of all your panels unless you invest in micro-inverters or other optimizing devices. Solar Panel Orientation and Elevation: So we've established that there's a sweet spot for your solar panel ...



The best angle and direction for solar panels [UK, 2024]

If your roof has a south-facing section, your installer should prioritise using it, but if not, solar panels are now advanced enough to make exclusively east-west arrays also work well. East-facing panels produce more ...

Solar panel myths: five common concerns about solar

...

Solar panel problems are common. Nearly seven

in 10 solar panel owners we surveyed have had no technical problems with their solar panel system since it was installed. Among those who did report a technical fault, inverter problems ...



[Solar Panel Output Calculator UK 2024](#)

If you're planning to cut your energy bills and help the climate by getting solar panels on your roof, you'll want to know exactly how much electricity they can produce and which is the most efficient solar panel.. Learning about ...

Can Solar Panels Be Installed in the Rain?

Installing solar panels can be a significant investment, so having a properly designed solar panel stand is crucial to protect that investment and optimize solar production. With the right solar panel stand design, you can ...



Which Solar Panel Direction (Orientation) Is Best?

Power Loss Table: This table shows how much energy you can expect to get from almost any combination of solar panel direction and angle in the capital cities, compared to the 'optimum' orientation. For example, in ...

[Partial shading and solar panel arrays](#)

Why does shading have such a dramatic impact on energy production? In most instances, solar photovoltaic (PV) systems for homes and businesses consist of solar panels (the collection of which is referred to as the ...



Can Solar Panels Be Installed On Listed Buildings In ...

Understanding the Solar Panel & Battery Storage Installation Process With Solar Planet. Frequently Asked Questions. Can solar panels be installed on any listed building in the UK? It depends on the specific building ...

Contact Us

For catalog requests, pricing, or partnerships, please visit:
<https://ian-solar.co.za>