

## Solar Energy South Africa

# Can photovoltaic panels be installed on the roof of a factory building



## Overview

---

Can solar panels be installed on a factory roof?

The roofs of factories are often the ideal place to install solar panels. As factories are energy-intensive buildings, installing a solar PV system on the roof of a factory ensures free power can be generated to run everything underneath it.

Can solar PV be installed on warehouse roofs?

Installing solar PV on warehouse roofs means generating free electricity for the warehouse and adjacent buildings, such as offices. Warehouse and logistics firms can significantly reduce their energy bills with a solar PV system.

Do you need planning permission to install solar panels on your roof?

An increasing number of people are investing in solar energy. More and more homes are having solar panels, or solar tiles, installed on their roofs. Of course, with such installations, the topic of planning permission and building regulations often comes to the surface.

Can industrial buildings use solar panels?

Industrial buildings have straightforward roof spaces that are ideal for solar panels. Businesses can significantly reduce their overheads by generating their own electricity from solar energy with industrial solar panels. Mypower specializes in installing high yielding and efficient industrial solar panels, which have won awards for their design.

Can a commercial solar PV system be moved?

The inability to move PV panels and still remain eligible for the FIT had been seen as a significant barrier to PV deployment on commercial roof space. In Germany it is possible to transfer a solar PV system and it is thought this has contributed to the much higher commercial solar penetration in that market.

Can I install solar panels if I don't meet building regulations?

Your local authority can also apply for a Confiscation Order to take away any money you've earned with your system – so there's absolutely no benefit to installing solar panels that don't meet building regulations. It's crucial that your solar installation follows all building regulations.

## Can photovoltaic panels be installed on the roof of a factory building

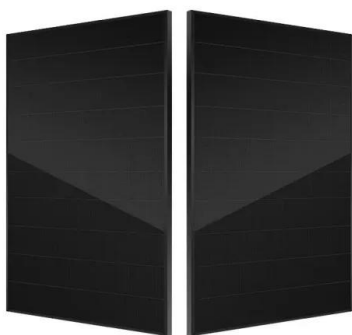


### Pros and Cons Of Solar Panels on Commercial Buildings

Contracting with a solar panel installation company helps the local economy. A layout with too many trees or buildings can be disadvantageous for the use of solar panels. If the commercial building is ...

### Solar PV: Safety and The Building Regulations

Fire resistance of roof coverings esp roof integrated PV panels, PV tiles & PV slates ; Cable penetrations through walls, ceilings and floors must not assist the spread of fire ; Adequate ventilation of heat producing equipment e.g solar PV ...



### Commercial Solar Panels in the UK: Guide (November ...

Commercial solar panel installation can bring many benefits: Over the 25-year lifetime of solar panels, savings can equate to thousands of pounds. A 20kW system can potentially save businesses over £3,000 annually ...

### [Fixing solar panels to membrane roofs](#)

In a ballasted installation, the PV array is not fixed to the roof but is held in place by weights,

often concrete blocks. The calculation is dependent on the building location, the height of the roof, whether there is a parapet and the angle of the ...



### Solar Panel Fixing Options

Here is a piece on Solar Panel Fixing Options built to help Developers, Contractors, Architects, and Homeowners grasp what's on offer for fixing PV panels. An in-roof solar panel system sits on top of the roofs battens and is ...

## Is Your Roof Strong Enough for Solar Panels? , Paradise Energy

When it comes to the exact weight of a solar panel, it will vary from brand to brand and model to model. you can trust that the panels overhead are safely mounted to the roof and will not ...



## 10 Considerations for Rooftop Commercial Solar ...

Rooftop commercial solar is a photovoltaic system that uses solar panels on a building's roof to generate electricity. The many parts of such a system include photovoltaic modules, wires, solar inverters, mounting ...

## A Guide to Metal Roof Solar Installation , Greentech Renewables

CorruBracket includes a factory-applied butyl sealant in its base, a suitable option for efficiency and ease of installation. However, it is crucial to check with the roof manufacturer's warranty ...



## Installing Solar Panels on Different Roof Types

If you're considering installing a residential or commercial solar panel system, you might wonder if your roof type is appropriate for a solar installation. The good news is that solar panels can be installed on just about ...

## Contact Us

---

For catalog requests, pricing, or partnerships, please visit:  
<https://ian-solar.co.za>