

Overview

How can high and low voltage be mixed in a junction box?

So I'm aware of the standard rule of thumb, keep high and low voltage away from each other, preferably on opposite sides of a stud. However, while looking at some properties, I'm seeing telephone and cable lines in the same junction box as an electrical outlet.

Do high and low voltage conductors need to be separated?

High and low voltage conductors in the same junction box must be separated by a barrier. Outdated NEC reference: 800-52 (a) (1)c.1.Exception 1. In the typical dbl. gang box installation, power in one half and phone and data in the other, there needs to be a partition in the box separating the two classes of conductors.

What is a low voltage system?

It is a wiring network that carries a low-voltage or low-pressure current compared to standard electrical wiring for medium—and high-voltage power transmission and distribution equipment. Standard low voltages are 12V, 24V, and 48V. Low-voltage systems are comprised of electrical equipment that uses 50 volts (V) of electricity or less.

How safe is low-voltage wiring?

Low-voltage wiring, used in security cameras and internet networks, must follow specific safety rules to ensure it is installed correctly and safely. These rules are mainly outlined in the National Electrical Code (NEC), which helps prevent electrical hazards.

What is the NFPA code for low voltage wiring?

Low-voltage systems require an efficient network to function correctly. The National Electric Code, or NFPA 70, is the widely accepted standard for the safe low voltage installation in the United States. Also, learn more about

network installation. What Is Code for Low Voltage Wiring?

.

Can a low voltage insulator be used with 600 volt insulation?

No, even though 300.3 (C)1 would seem to allow it, and most electricians will state if the low voltage has 600 volt insulation, then its OK. Take a look at the FPN to 300.3 (c)1

Can the low-voltage box be placed in a locker



Introduction To Electrical Boxes , Low Voltage Installer

Electrical boxes come in many shapes, sizes and materials. In many cases, there are several correct options, each with advantages, disadvantages, and costs to consider. This article will cover the most common boxes used by low-voltage ...

How to Protect Low Voltage Wiring: Full Guide

Unshielded low-voltage wire running parallel to standard high-voltage wiring (120V and 240V) must be separated by at least 8 inches. Shielded low-voltage wires may run parallel with the same high-voltage wires within 8 ...



Low voltage equipment in a box with 110 wires? : r/electrical

The question is whether it's OK for 110 VAC and low voltage wiring to be in the same electrical box. Obviously, when a controller running on low voltage controls a line voltage appliance, the ...

[Data and power in the same pull box?](#)

From an American perspective, if your line voltage and low voltage co-mingle then in my

opinion all your data equipment and wiring should be Class 1 rated, to safely handle the line voltage should it get impressed on ...



Installing low voltage cable before drywall

Any maybe not run in right into a low voltage box, but end the conduit right near the box so then I can put a service loop of cable in the wall right before going into the low voltage box? My current plan is to become best friends with the ...

Everything You Need to Know About Voltage in Landscape Lighting

As previously stated, there are two voltage options for outdoor illumination: low voltage (12V) and line voltage (120V). High voltage, line voltage, or standard voltage are all terms used to ...

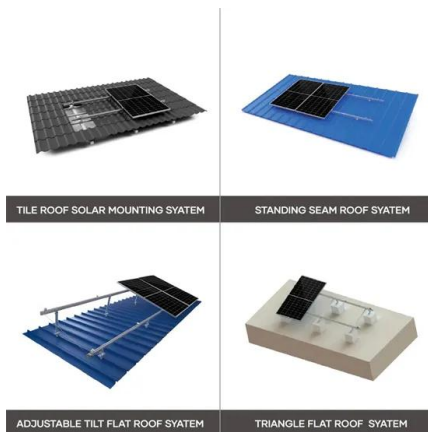


How to Install a Low Voltage Transformer

Step 2: This VOLT® transformer comes with three different sizes of knockouts on the bottom - 0.5 inch, 0.75 inch and 1.5 inch. Remove one of the 0.5-inch knockouts so that you can place wire up inside the transformer. To do this, ...

Low Voltage Wiring Code: Everything You Need To Know

Low-voltage wires should be installed a foot away, at minimum, from the facility's main electrical wires, running parallel with all the cabling. When working with low-voltage wire, it is essential to read the manufacturer's ...

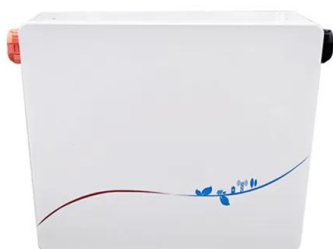


Introduction To Electrical Boxes , Low Voltage Installer

This article will cover the most common boxes used by low-voltage electricians. Regardless of which box you select, a key factor when installing an electrical box is to set the box or select a mud ring that matches the planned thickness of ...

November 2007 Combining Low-Voltage and Line-Voltage Wiring ...

Introduction. The NEC® (National Electric Code) allows line-voltage wiring devices, e.g., light switches, dimmers, and receptacles to be placed in the same multi-gang box as low-voltage ...



November 2007 Combining Low-Voltage and Line-Voltage

...

8 in boxes (Model #974) and a partition for 2-1/2 in boxes (Model #949). Once this partition is in place, each side of the partition is considered a separate box. Therefore, all of the devices can ...

Can you put a transformer in a 2 gang box? This is a ring pro

Like many have said, can't have line and low voltage in the same box without a ul divider. I've used a dual voltage box like this and drilled a 7/8 " hole to mount the transformer. Line wires go ...



Contact Us

For catalog requests, pricing, or partnerships, please visit:
<https://ian-solar.co.za>