

Solar Energy South Africa

China haug en sl rlc



IP65/IP55 OUTDOOR CABINET

OUTDOOR TELECOM CABINET

OUTDOOR ENERGY STORAGE CABINET

19 INCH

China haug en sl rlc



[HAUG??EN SL RLC 01.7835.200](#) [????](#)

haug??en sl rlc 01.7835.200 ?????. haug en sl ???
???. en sl ??????????????, ??????????????en sl
?????????????,??? haug ?????????????? ?????????????? 7 -
8 kv?????

Static Line

EN SL II Signalling cable K3 Plug EN SL RLC / EN
SL SD Signalling cable K6 Plug Types EN SL EN SL
EN SL EN SL EN SL EN SL EN SL LC EN SL LC EN
SL RLC EN SL RLC (230 V) Order-No.:
01.7780.220 (115 V) Order-No.: 01.7781.220
Output short-circuit current 3 mA, max.
connectable length 5 m (230 V) Order-No.:
01.7780.200 (115 V) Order-No.: 01.7781.200



HAUG Power Supplies , Static Control Solutions , Tech Sales Co.

The Haug S-Line or EN-SL Power Supplies or Power Pack units are CE approved for European applications and where the CE approval is required. Like the EN-C the EN-SL series produces a high voltage in the range of 7,000 to 8,000 volts. The EN SI RLC has a socket to connect to a separate main board to indicate if a fault occurs. View More

[GB Operating instructions](#)

Discharging power pack EN SL Ident number:
01.7780.500 (230 V), 01.7780.508 (200 V),
01.7781.500 (115 V), 01.7781.508 (100 V),
alternating high voltage to HAUG ionizing units
with X-2000 connector. In combination with an
ionizing unit, electrostatic charges



HAUG????????EN SL??EN SL
RLC-???

en sl????????????,???????????? EN
SL????????????,???HAUG????????????
????????????????? ...

HAUG????????EN SL??EN SL RLC

????en sl rlc. en sl lc????????,en sl rlc????????
??24 vac/35
vdc?????50 ma?



HAUG????????EN SL??EN SL RLC

????en sl lc. ??en sl,????????????????????
????????????????????????????????????led????????????? ...



[HAUG EN-SL-RLC HAUG](#)

en-sl-rlc haug HAUG, EN-SL-RLC, ce, :2, :2, :2 HAUG EN-SL ...



[HAUG Static Control EN SL RLC digital](#)

HAUG Static Control EN SL RLC digital Technical Data: Input Voltage: Either 230V or 115V 50-60Hz (customer to specify preference) Enclosure: 200mm L x 190mm W x 110mm H Weight: 3.6kg IP: 45 Part Number: P-01.7845.000 (230) P-01.7846.000 (115) Signaling cable: P-06.8976.000 (5m)



[HAUG EN SL EN SL RLC](#)

en sl rlc; haug en sl en sl rlc. en sl lc, en sl rlc 24 vac/35 vdc 50 ma?



Our Lifepo4 batteries can be connected in parallels and in series for larger capacity and voltage.



Haug EN SL RLC , Power Supply , Repair & Supply , Lektronix

Haug - EN SL RLC repair options: Standard Repair - Up to 10 working days* Emergency Repairs - Up to 3 working days.* * Repair service is subject to evaluation. At Lektronix we can provide you with a brand new Haug EN SL RLC covered by the ...

[Haug EN SL RLC Manuals , ManualsLib](#)

We have 1 HAUG EN SL RLC manual available for free PDF download: Operating Instructions Manual . HAUG EN SL RLC Operating Instructions Manual (26 pages) Brand: HAUG , Category: Power Pack , Size: 0.57 MB Table of Contents. Table of Contents. 3. 1 Operator Instructions. 5. 2 Safety. 6. 3 Intended Use



[Haug EN SL LC Manuals , ManualsLib](#)

We have 2 HAUG EN SL LC manuals available for free PDF download: Operating Instructions Manual . HAUG EN SL LC Operating Instructions Manual (26 pages) Brand: HAUG HAUG EN SL RLC ; Haug EN SL MT Series ; Haug EN SL SLC MT

[Operating instructions Static Line](#)

EN SL RLC with thermal cutout, signalling lamp and signalling socket: 01.7835.100, 01.7835.150, 01.7836.100, 01.7836.150 . 1 Operator instructions 1. Operator 2 HAUG- High-voltage terminals . Connectable HAUG ionizing units . All HAUG ionizing units fitted with X - 2000 connector . High-voltage .



[Static Line Mode d'emploi](#)

d'ionisation HAUG à connecteur X-2000. Seuls pourront être raccordés au bloc d'alimentation électrique, et exploités Le voyant clignote (EN SL LC et EN SL RLC uniquement) L'appareil d'ionisation présente un défaut. Passez par les étapes de travail successives



HAUG EN 70/EN 70 LC/EN 70 RLC Power Pack

The high-voltage power pack EN 70 / EN 70 LC / EN 70 RLC is a powerful and hardwearing unit s design fulfills all electrical engineering requirements. The EN 70 / EN 70 LC / EN 70 RLC power pack is used in fast-running machines in combination with tandem ionizing bars.

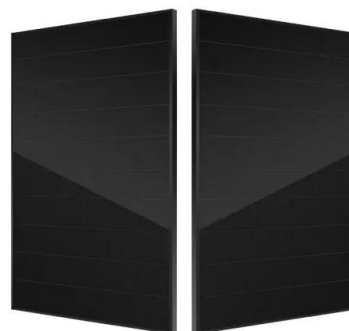


Haug????EN SL RLC 230V_??/???-??(??)??? ...

??100????Haug????EN SL RLC 230V
 ??100????Haug????EN SL RLC 230V. FCT????F-MH1 /124380: China End user: Fuzhou Fuda Automation Technology Co., Ltd. AUMA Electric actuator 812058445: ANDREAS 6972F-05 66951,hydraulic cylinder:

HAUG Power Pack EN SL LC , PDF , Power Supply

HAUG Power Pack EN SL LC - Free download as PDF File (.pdf), Text File (.txt) or read online for free. The power pack EN SL provides a service-friendly power supply with two high-voltage terminals and a main on/off switch with a display light. The EN SL LC adds integrated full-electronic function monitoring to constantly monitor



functions and alert of irregularities.



 LFP 280Ah C&I

[HAUG Ionization Systems Product Line](#)

The EN 70 / EN 70 LC / EN 70 RLC power pack is used in fast-running machines in combination with tandem ionizing bars. << Learn More << Power Pack EN SL. the HAUG EI SL ionizing bar is setting new standards: Ensuring an optimal neutralizing effect, it eliminates electrostatic charges during roll, sheet and web processing.

[Netzteil EN SL / EN SL LC / EN SL RLC](#)

EN SL RLC mit Thermowächter, Meldeleuchte und Meldebuchse: 01.7835.100, 01.7835.150, 01.7836.100, 01.7836.150 . 1 Benutzerhinweise 1. von HAUG-Ionisationsgeräten mit X-2000 Stecker. An das Netzteil dürfen ausschließlich HAUG-Ionisationsgeräte mit X-2000 Stecker angeschlossen und betrieben



EN SL RLC UL

01.7904.100_???(??)??????????????

HAUG????? VS021.4200 HAUG HAUG?????VSmm
????? EN-SL-RLC HAUG ??????? HT-cable VK-
NORM 23 650 L=6500 HAUG 05.8519.650 ?????
EN 70 ...

HAUG Ionisation - C L R EN SL, EN SL LC, EN SL RLC The EN ...

The S-Line power pack works ideally with HAUG ionizing S-Line power pack EN SL LC As EN SL,

but with integrated full-electronic function monitoring. This system constantly monitors all functions of EN SL RLC 230 V 10 m 5 mA
 01.7780.400 0 0 T A T I C 14 5 17 5 Ø 7 T A T I C
 1 9 0 9 7 1 6 7 1 7 1 1 0 7 300 International
 Drive, Suite 100



??(HAUG)

Haug EN SL RLC 2,6 m
 Netzkabel,ID:01.7835.100. Haug 01.7835.100
 Netzteil EN SL RLC 2,6 m Netzkabel. Haug ID:
 01.7835.100. Haug S-Line EN SL LC, 220V,2
 outlet power supply. Haug VS 100 200. Haug
 03.8020.071 VS 050 200 Al í 18. Haug HSV 8457
 500 TPE. Haug PS 024 400 axial. Haug
 12.7229.000, Multicheck Funktionspruefgeraet.
 Haug VL 22 TPE

**EN SL RLC UL
 01.7904.100_???(?)??????????????**

HAUG????? VS021.4200 HAUG HAUG?????VSmm
 ????? EN-SL-RLC HAUG ??????? HT-cable VK-
 NORM 23 650 L=6500 HAUG 05.8519.650 ?????
 EN 70 LC 230VAC 50-60Hz 2ht HAUG 01.7701
 .100 Nanyang Road Jinshui District Zhengzhou
 He Nan CHINA Tel: (+86)371-63296706/ (+86



HAUG??EN SL RLC 01.7835.200
????

en sl ??????????????, ?????????????? EN SL
 ??????????????,??? HAUG ?????????????? ?????????????? 7 -
 8 kV?????



Contact Us

For catalog requests, pricing, or partnerships, please visit:
<https://ian-solar.co.za>