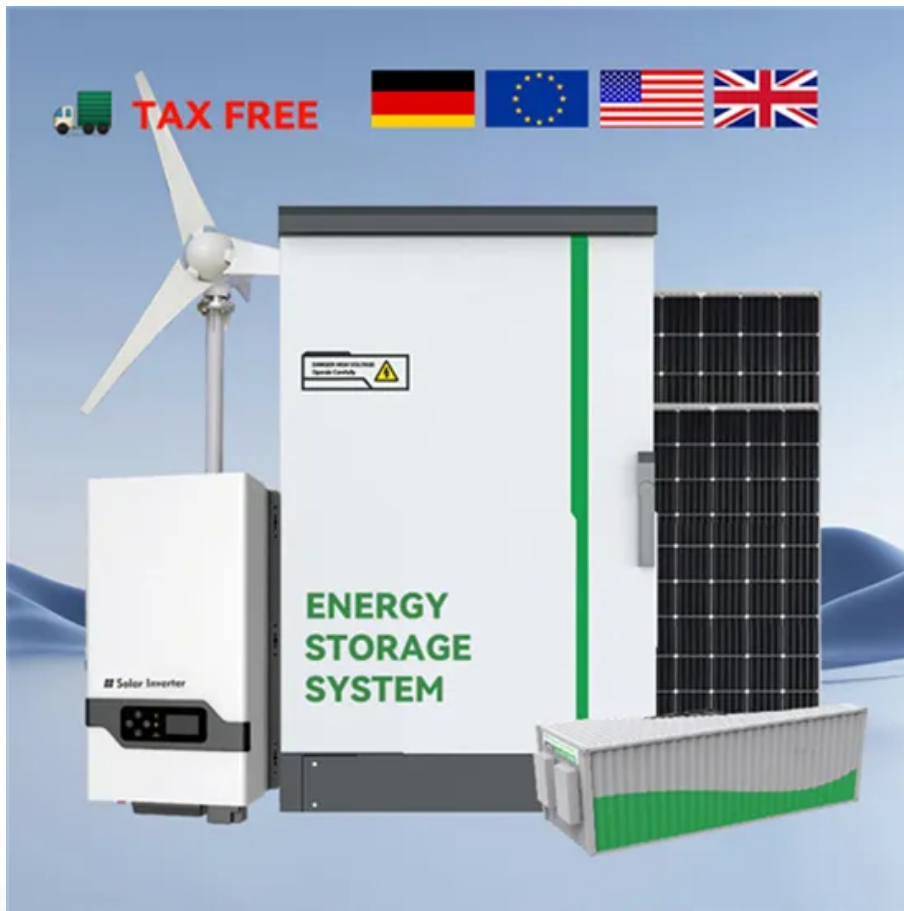


## Solar Energy South Africa

# Frameless pv modules Honduras



## Frameless pv modules Honduras

---

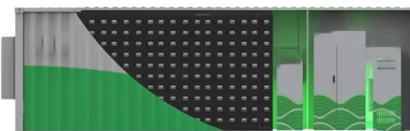


### No Frame on the Front Side: Gstar's CleanEdge Module Granted ...

The most standout feature of the CleanEdge Module is its frameless design on the front (A-side). This innovative design completely eliminates the protrusion of traditional module frames, not only making the module a full-screen appearance but also significantly preventing water and dust accumulation in practical applications.

### Frameless glass-glass solar modules made in Europe have the ...

The German research institute has compared the CO<sub>2</sub> emissions of glass-glass and glass-backsheet solar modules manufactured in Germany, the EU and China, and found glass-glass modules enable an



### Framed Or frameless? New installation solutions for double glass

The frame can also be designed in the form of modules that can be embedded on both sides, that is, the same frame is used as a frame shared by two double-glass modules, and is installed on a bracket or roof to achieve continuous arrangement of photovoltaic modules.

## Frameless PV Module Installation (rail mounting and wire ...)

Frameless PV Modules can be a great option for installs, as they: Are aesthetically pleasing (slimline appearance). Are less expensive than traditional framed PV Modules. Have better performance (lack of debris buildup at the edge of the module). Have no grounding requirements. Are easy to transport and store (due to packaging density and weight).



## Glas Glas Module rahmenlos

Wie alle Module der „Excellent Glass/Glass“-Serien verfügen auch die Module der Serie „Excellent Glass/Glass frameless“ über ein überragendes Leistungsniveau und eine maximale Nachhaltigkeit gegenüber dem Branchenstandard durch: doppelte Lebensdauer; über 60% Mehrertrag; CO 2 optimierte Produktionsprozesse . Angebot anfordern

## Cando Solar unveils frameless 450 W heterojunction PV panels ...

The Chinese manufacturer says its new frameless heterojunction panels rely on busbarless technology and 210 mm wafers. The new products also feature a temperature coefficient  $-0.29\%/C$  and weigh



## Glas Glas Module rahmenlos

Wie alle Module der „Excellent Glass/Glass“-Serien verfügen auch die Module der Serie „Excellent Glass/Glass frameless“ über



ein überragendes Leistungsniveau und eine maximale Nachhaltigkeit gegenüber dem Branchenstandard durch: ...

## Frameless PV module mid & end clamps installation

Following is one of solar mounting case which we offer component kits for frameless PV modules . Thin file solar panel specification: Sunprime Maxima GxB 390 Bifacial Module, Double-Glass Frameless Design, robust and does not require module grounding . Dimensions: 1959 x 990 x 6 mm (6.43 x 3.24 x 0.02 ft) ;



## Frameless PV Modules from Trina Solar Optimized for Harsh ...

Trina Solar Limited has announced the 60-cell PDG5, the first in Trina Solar's new line of dual rated frameless modules. The PDG5 is resistant to potential induced degradation (PID) and micro-cracking, and does not require grounding. The PDG5 is optimized for reliable performance under stressful environmental conditions and is among the most durable modules ...

## Frameless bifacial PV module mount with rail project

we need to mount frameless bifacial PV modules (size 2020x1015x6mm) on the existing frame on

the roof. Modules need to be placed in portrait orientation. Rails must be mounted vertically along the modules from top to bottom. Amount of ...

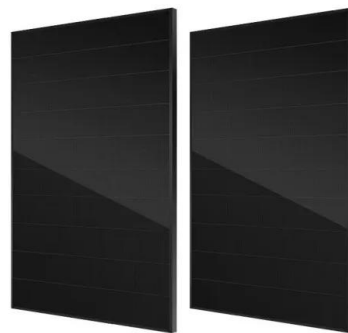


### Frameless Module End Clamp

These requirements also do not cover: performance during exposure to fire, structural attachments for the rack mounting system, structural performance of roof attachments for above roof mounting of photovoltaic (PV) modules and panels, and the mechanical and structural requirements of the IBC or IRC.

### INSTALLATION MANUAL

clamps can install the PV modules. (about 1m)  
 STEP 3: Install the PV modules Insert the PV module into the clamp, and then tighten the nut. M8 ss304(16N·m~20N·m) Installation Example B - For Aluminum rails- For TSM-xxx system  
 STEP 1: Install the clamp Insert clamp into the connector racking. M8 ss304 STEP 2: Install the module



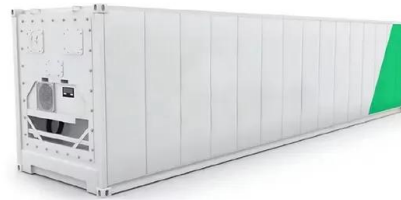
### **ADANI Frameless N-Type Bifacial Dual Glass PV Modules [MONO ...**

Modules made with N type bifacial solar cells; Up to 450 Wp at 30 % ground reflectivity; Characterised for 1000W/m<sup>2</sup> & 200W/m<sup>2</sup> on the front and Rear side respectively; Up to 85 % bifaciality factor; 2\*IEC testing to ensure

extremely high reliability of PV modules; Near zero LID, PID free, 1500 V module; High insulation resistance due to special

## Frameless PV module mounting with inter & exterior clamps on

With our frameless clamps, the whole thin-film solar panels can get more sufficient exposure and surface to sun, so that we can generate more electric power . Features of our frameless solar panel mounting kits: - Our clamps are compatible for most of thin-film PV modules ; - +2400 / - 2400 Pa above testing for loading PAs ;



## Contact Us

---

For catalog requests, pricing, or partnerships, please visit:  
<https://ian-solar.co.za>