

Solar Energy South Africa

Gibraltar building integrated pv



Gibraltar building integrated pv



Building-Integrated Photovoltaic Desings for Commerical and

Building-Integrated Photovoltaics for Commercial and Institutional Structures: A Sourcebook for Architects and Engineers was prepared for the U.S. Department of Energy's (DOE's) Office of Power Technologies, Photovoltaics Division, and the Federal Energy Management Program. It was written by Patrina Eiffert, Ph.D.,

A key review of building integrated photovoltaic (BIPV) systems

PV systems used on buildings can be classified into two main groups: Building attached PVs (BAPVs) and BIPVs [18] is rather difficult to identify whether a PV system is a building attached (BA) or building integrated (BI) system, if the mounting method of the system is not clearly stated [7], [19]. BAPVs are added on the building and have no direct effect on ...



Machine learning driven building integrated photovoltaic (BIPV)

The results show that the optimized building envelope with the integrated PV system reduces energy consumption by 45 % compared to the non-optimized envelope. ElSayed [13] focused on optimizing the thermal performance of building-integrated photovoltaics (BIPV) to upgrade informal urbanization in Egypt. The paper

presented a case study of a

Building-Integrated Photovoltaic (BIPV) products and systems: A ...

Building-Integrated Photovoltaics (BIPV) is an efficient means of producing renewable energy on-site while simultaneously meeting architectural requirements and providing one or multiple functions of the building envelope [1], [2]. BIPV refers to photovoltaic modules and systems that can replace conventional building components, so they have to fulfill both ...



???????

???????(?:Building-integrated photovoltaics,??BI PV),????????????????,????????????????????????????,?? ???? ??????????????,????????????????,????????????,???

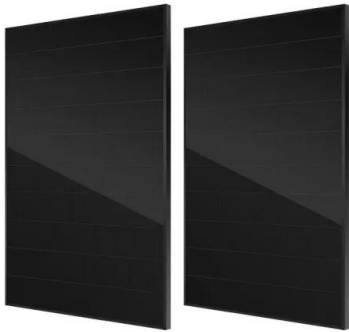
Building-integrated photovoltaic technologies and ...

Who can get involved in the project Professionals from the BIPV and construction sector. Architects and engineers from the architectural, construction and/or engineering companies, urban planners, PV installers, ...

12.8V6Ah

- Nominal voltage (V):12.8
- Nominal capacity (Ah):6
- Rated energy (Wh):76.8
- Maximum charging voltage (V):14.6
- Maximum charging current (A):6
- Floating charge voltage (V):13.6-13.8
- Maximum continuous discharge current (A):10
- Maximum peak discharge current @10 seconds (A):20
- Maximum load power (W):100
- Discharge cut-off voltage (V):10.8
- Charging temperature (°C):0-+50
- Discharge temperature (°C): -20-+60
- Working humidity: <95% R.H (non condensing)
- Number of cycles (25 °C, 0.5c, 100%DoD): >2000
- Cell combination mode: 32700-4s1p
- Terminal specification: T2 (6.3mm)
- Protection grade: IP65
- Overall dimension (mm):90*70*107mm
- Reference weight (kg):0.7
- Certification: un38.3/msds

A Review of the Significance and Challenges of Building Integrated



In a clear distinction between PV and BIPV, the building-integrated system requires an adaptation of the PV technology to meet basic architectural component design requirements such as functionality, stability and aesthetics as well as energy generation [1]. For a BIPV project design, further emphasis should be given to the set goal for each of these targets.

Building Integrated Photovoltaics (BIPV)

Overview. Building integrated photovoltaics (BIPV) are increasingly incorporated into new domestic and industrial buildings as a principal or ancillary source of electrical power, and are one of the fastest growing segments of the photovoltaic industry.. Typically, an array is incorporated into the roof or walls of a building and roof tiles with integrated PV cells can now be purchased.



Building Integrated Photovoltaic Power Systems

Assessment of Building Integrated Photovoltaic Power Systems is to identify the economic parameters of BIPV systems. Section 1 identifies general methods of assessing the economic performance of BIPV systems. A major barrier to analyzing renewable energy systems is assembling and presenting the technical

Potential for Building Integrated Photovoltaics

Potential for Building Integrated Photovoltaics
 Report IEA - PVPS T7-4 : 2002 (Summary) 2
 Photos on the cover Façade integrated

photovoltaic power station (47 kWp). Within the frame of refurbishment work on so-called „Plattenbauten“ in Berlin-Marzahn in former German Democratic Republic / East Germany. Source: Marcel Gutschner



Potential of residential building integrated photovoltaic systems in

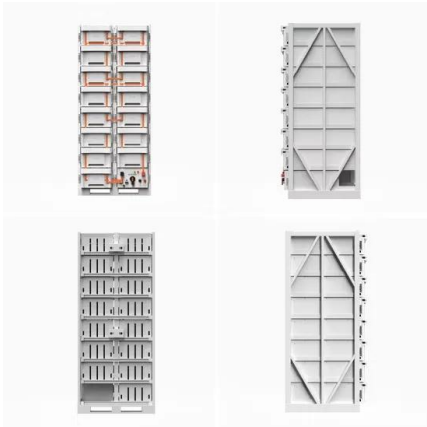
Building integrated photovoltaic (BIPV) is a promising solution for providing building energy and realizing net-zero energy buildings. Based on the developed mathematical model, this paper assesses the solar irradiation resources and BIPV potential of residential buildings in different climate zones of China. It is found that roofs are the

A comprehensive review of a building-integrated photovoltaic ...

To encourage the development of integrated photovoltaics (BIPV), some nations have put in place incentive programs [12]. One example is the BIPV incentive subsidy program that China implemented in March 2009, which provided about \$3 US dollars per watt for BIPV installations [36]. Research on BIPVs has shown that these systems are capable of supplying ...



IEA-PVPS calls for harmonized testing, certification for building



1 ??· From pv magazine Global. There is an urgent need to harmonize testing and certification standards for building-integrated photovoltaics (), according to the latest report from the ...

IEA-PVPS calls for harmonized testing, certification for building

1 ??· The latest report from the International Energy Agency's (IEA) Photovoltaic Power Systems Programme (PVPS) says the building-integrated photovoltaics (BIPV) industry is ...



The recent advancements in the building integrated photovoltaic...

The building-integrated photovoltaic-thermal configuration (BIPV/T) has exploited the envelope or roof of buildings with PVT assemblies to produce both heat and electricity. Consequently, the BIPV/T system provides a viable way for reducing energy consumption and achieving low-energy building requirements. This study provides an up-to ...

OVERVIEW , Building integrated photovoltaics (BIPV) ...

The concept of Building integrated photovoltaics (BIPV) refers to the integration of technology, -- refers to the capacity of the photovoltaic (PV)

cars, and eventually, sending solar power to Earth, is bright. The future for this renewable source of energy is bright, and it's only going to get brighter. One of the next steps toward environmentally



Summary: Challenges and Opportunities for Building-Integrated

On March 7, 2022, the U.S. Department of Energy (DOE) Solar Energy Technologies Office (SETO) and Building Technologies Office (BTO) released a Request for Information (RFI) on technical and commercial challenges and opportunities for building-integrated and built-environment-integrated photovoltaic systems (BIPV). Both SETO and BTO have supported ...



Warranty
10 years

LIFePO₄

Intelligent BMS

Wide Temp:
 -20°C to 55°C



Building-integrated photovoltaic technologies and systems for ...

Who can get involved in the project Professionals from the BIPV and construction sector. Architects and engineers from the architectural, construction and/or engineering companies, urban planners, PV installers, building managers, universities and research centers

Contact Us

For catalog requests, pricing, or partnerships, please visit:

<https://ian-solar.co.za>