

## Solar Energy South Africa

# Heard and McDonald Islands cumulus energy storage



## Overview

---

Where are Heard Island and McDonald Islands located?

The islands are a territory (Territory of Heard Island and McDonald Islands) of Australia administered from Hobart by the Australian Antarctic Division of the Australian Department of Climate Change, Energy, the Environment and Water.

How big is Heard Island & McDonald Islands?

The group's overall land area is 372 km<sup>2</sup> (144 sq mi) and it has 101.9 km (63 mi) of coastline. Discovered in the mid-19th century, the islands lie on the Kerguelen Plateau in the Indian Ocean and have been an Australian territory since 1947. Heard Island and McDonald Islands contain Australia's only two active volcanoes.

Does Heard Island have a harbour?

Heard Island and the McDonald Islands have no ports or harbours; ships must anchor offshore. The coastline is 101.9 km (63.3 mi) in extent, and a 12 nmi (22 km) territorial sea and 200 nmi (370 km) exclusive fishing zone are claimed. [ 2 ].

How big is Heard Island?

Heard Island, by far the largest of the group, is a 368-square-kilometre (142 sq mi) mountainous island covered by 41 glaciers [ 22 ] (the island is 80% covered with ice [ 2 ]) and dominated by the Big Ben massif.

Where are the McDonald Islands located?

The much smaller and rocky McDonald Islands are located 44 kilometres (27 mi) to the west of Heard Island. They consist of McDonald Island (186 m or 610 ft high), Flat Island (55 m or 180 ft high) and Meyer Rock (170 m or 560 ft high).

Is Heard Island a subantarctic island?

The fauna of the freshwater pools, lakes, streams and mires found in the coastal areas of Heard Island are broadly similar to those on other subantarctic islands of the southern Indian Ocean. Many species reported from Heard Island are found elsewhere.

## Heard and McDonald Islands cumulus energy storage



### Conservation values in the marine environment surrounding ...

Conservation values in the marine environment surrounding Heard Island and the McDonald Islands Department of Climate Change, Energy, the Environment and Water v Summary Heard Island and McDonald Islands (HIMI) are an external Territory of Australia, located approximately 4000 kilometres southwest of Australia in the southern Indian Ocean.

### Marine protected areas and toothfish fishing around Heard and McDonald

On July 5, the Australian government announced its intention to protect an additional 300,000 square kilometers of maritime space around the Heard and McDonald Islands, more than 4,000 kilometers southwest of Tasmania in the Southern Ocean. The project would expand an existing marine protected area to cover 90% of the exclusive economic zone



- IP65/IP55 OUTDOOR CABINET
- OUTDOOR MODULE CABINET
- OUTDOOR ENERGY STORAGE CABINET
- 19 INCH

### SRP and EDP announce 200MW energy storage in Arizona

The Salt River project (SRP) and EDP Renewables North America (EDPR NA) have announced the Flatland energy storage project, a 200MW/800 megawatt hours (MWh) battery energy storage system near Coolidge in the US state of Arizona. The new energy storage system supports the increasing energy demand in the region.

## Heard and McDonald Islands, Australia , SpringerLink

Heard Island is 43 km long and 21 km wide. McDonald Islands are a group of uninhabited rocky islets, 40 km west of Heard Island (Encyclopaedia Britannica 2006). Heard Island has approximately 362.5 km<sup>2</sup> of area and the McDonald Island, 2.6 km<sup>2</sup>. The site includes the adjacent offshore rocks and shoals and all territorial waters to a distance of 12 nautical ...



### [Heard Island and McDonald Islands](#)

Heard Island and McDonald Islands in the Southern Ocean A map of Heard Island and McDonald Islands. Heard Island, by far the largest of the group, is a 368-square-kilometre (142 sq mi) mountainous island covered by 41 glaciers [21] (the island is 80% covered with ice [1]) and dominated by the Big Ben massif has a maximum elevation of 2,745 metres (9,006 ft) at ...

## (PDF) Heard Island and the McDonald Islands: A window into the

McDonald Island is much smaller (2.5 km<sup>2</sup>), about 100 000 years old and totally ice-free, and is predominantly composed of phonolitic rocks. 9, 10 During the campaign, signs of volcanic activity



### [Hearduv ostrov a McDonaldovy ostrovy](#)



has 101.9 km (63 mi) of coastline. Discovered in the mid-19th century, the islands lie on ...



## Heard and McDonald Islands

Heard and McDonald Islands Heard and McDonald Islands This is one of the wildest and remotest places on earth. Heard Island is dominated by Big Ben, Australia's highest mountain and an active volcano, under a deep mantle of snow and glaciers. On the horizon, the volcanic McDonald Islands rise precipitously out of the world's stormiest waters.

### Isole Heard e McDonald

L'isola Heard e le isole McDonald sono isole disabitate che si trovano nell'Oceano Antartico, a circa due terzi di distanza tra il Madagascar e l'Antartide. Esse costituiscono un territorio esterno australiano dal 1947 e contengono i due soli vulcani attivi presenti sul territorio australiano, uno dei quali (Mawson Peak) è anche la montagna australiana più elevata, con 2.745 metri.



## 2025?????????? Energy Storage North America

?????????? Energy Storage North America  
 ??????????, ?????????????????????, ??????????????????,  
 ?????????????????????, ??????? ...



## [Heard Island And McDonald Islands](#)

Many vascular plants are also found on the Heard and McDonald Islands. Elephant seals in Heard Island. Image source: Heard Island Expedition/laikolosse/Flickr. The main native fauna of the Heard and McDonald Islands include several insects along with large populations of seals, penguins, petrels, albatrosses, and other seabirds.



## [Îles Heard-et-MacDonald -- Wikipédia](#)

Les îles Heard-et-MacDonald, en anglais Heard and McDonald Islands et Territory of Heard Island and McDonald Islands [1], sont un territoire extérieur de l'Australie situé dans le sud de l'océan Indien, sur la plaque antarctique. Il est constitué d'un petit archipel, les îles McDonald, ainsi que d'une île isolée, l'île Heard. Situé à 422 km au sud-sud-est des îles Kerguelen, à 1 ...

## [Heard Island and McDonald Islands Map](#)

Wolof: Heard Island and McDonald Islands; Wu Chinese: ??????????; Yoruba: Erékùsù Heard àti Erékùsù McDonald; Yoruba: Erékùsù Heard àti

Àwon Erékùsù McDonald; Yoruba: Heard Island and McDonald Islands; Yue Chinese: ?????????; Zulu: I-Heard & McDonald Island; Heard- og McDonaldseyjar



## **COP29: can the world reach 1.5TW of energy storage by 2030?**

According to Power Technology's parent company, GlobalData, global energy storage capacity is indeed set to reach the COP29 target of 1.5TW by 2030. Rich explains that pumped storage hydroelectricity (PSH) has been central to the energy transition, having contributed more than 90% of deployed global energy storage capacity until 2020.

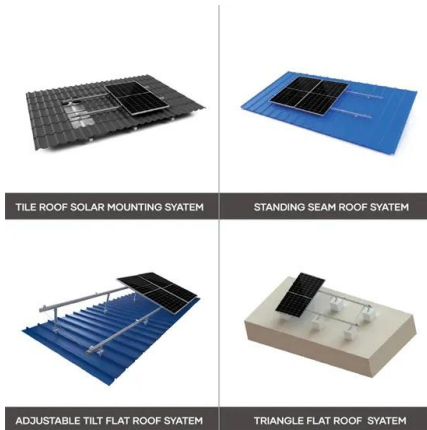
## Energy Storage

Key to changing the energy mix is effective energy storage solutions, where energy is produced energy needs to be stored and consumed when demand doesn't meet production. IPS is working in innovative compressed air storage solutions, in cooperation with CTG, for storage of energy in the ground, as well as traditional options like large scale



## Heard Island and McDonald Islands

The islands are a territory (Territory of Heard Island and McDonald Islands) of Australia administered from Hobart by the Australian



Antarctic Division of the Australian Department of Climate Change, Energy, the Environment and Water.

## Heard and McDonald Islands

Heard Island and McDonald Islands are located in the Southern Ocean, approximately 1,700 km from the Antarctic continent and 4,100 km south-west of Perth. As the only volcanically active subantarctic islands they 'open a window into the earth', thus providing the opportunity to observe ongoing geomorphic



## Heard en McDonaldeilanden

De Heard en McDonaldeilanden (Engels: Heard Island and McDonald Islands (HIMI)) zijn een onbewoonde onherbergzame subantarctische eilandengroep in het zuiden van de Indische Oceaan op de breedtegraad van Vuurland en op dezelfde lengtegraad als Mumbai. Ze liggen op 1700 km van Antarctica en op 4100 km zuidwestelijk van Perth eilanden vallen onder de

...

## Heard and McDonald Islands

Heard and McDonald Islands are remote sub-Antarctic volcanic islands located in the southern Indian Ocean about half-way between Australia and South Africa, and just over 1,600 kilometres from Antarctica. The property covers a total area of 658,903 hectares of which about 37,000 hectares is terrestrial, and the remainder marine.



## [Heard Island and McDonald Islands](#)

Commonwealth of Australia since 1953. The Heard Island and McDonald Islands Act 1953 provides the legislative basis for the Territory's administration. Administration of the Territory is the responsibility of the Australian Government department that administers the Heard Island and McDonald Islands Act 1953. This responsibility has

## **MCDONALD ISLAND MARINE RESERVE PROPOSAL TO ...**

Schedule 1-- Heard Island and McDonald Islands Marine Reserve 1.1 Area of reserve (1) The Heard Island and McDonald Islands Marine Reserve consists of an area in the Southern Ocean that includes: (a) The land that forms part of Heard Island and McDonald Islands; (b) The territorial sea of Australia adjacent to Heard Island and McDonald Islands



## **Heard Island and McDonald Islands Marine Reserve**

: Heard Island and McDonald Islands Marine Reserve Management Plan 2014-2024. Department of the Environment, Canberra 2014,



ISBN 978-1-876934-25-5 (englisch, online [PDF; 4,5 MB]). Heard Island & McDonald Islands. Offizielle Website. Australian Government - Department of the Environment and Energy - Australian Antarctic Division (englisch).

## Contact Us

---

For catalog requests, pricing, or partnerships, please visit:  
<https://ian-solar.co.za>