

## Solar Energy South Africa

# Iraq shelly 3em solar

## ESS



## Overview

---

What is Shelly pro 3em?

Why Shelly Pro 3EM?

Shelly Pro 3EM is a Wi-Fi-operated DIN-mountable 3-Phase Energy Meter with Wi-Fi, Bluetooth, and LAN connectivity. With active energy measurement accuracy of 1%, Shelly Pro 3EM can be used to monitor the consumption of any home appliances, electric circuits, and office equipment individually.

Can I use the 3rd wire on a Shelly 3em?

You can use the 3rd wire. If you have a three-phase power supply, you need 2x Shelly 3EM, one connected before and after the grid supply and another after the inverter. Ensure that A/B/C phases on both 3EMs are connected to the same phases.

Does Shelly pro 3em support Modbus?

Shelly Pro 3EM brings support for MODBUS for voltage, current, power, and energies. You can accurately sample your energy usage and instantaneous values of voltage, current, and power. Our new firmware platform allows for custom implementation that can report as fast as every 100ms to your infrastructure.

Does Shelly pro 3em support MTLs?

Shelly Pro 3EM supports mTLS for MQTT, HTTP, and secure outbound WebSockets. Its industry-grade security allows for direct connections to your cloud infrastructure, reducing the cost of deploying complex networks and VPNs. Measure capacitive and inductive load types of active imported and exported energies.

Where is the Shelly PM Mini installed?

This Shelly PM Mini is installed in the socket through which the inverter of the

solar system feeds into the house grid. Would it please be possible to make the sign of this current adjustable in the Shelly app so that you don't have to install the devices differently in order to get the correct display in the new function?

Thank you very much.

Does Shelly ship internationally?

Shelly offers worldwide shipping, making our products accessible globally. Get a 3-year warranty on Shelly Plus, Wave, and Gen 3 devices, and 5 years on Shelly Pro and Wave Pro devices. Access expert tips and detailed guides in our Shelly Knowledge Base - ultimate resource for maximizing your smart home setup.

## Iraq shelly 3em solar

PUSUNG-R (Fit for 19 inch cabinet)

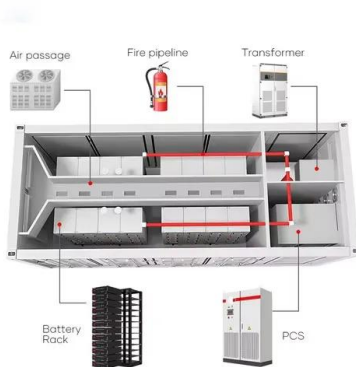


## Solar panels monitoring and control - Shelly USA

Keep track of how much energy your solar panels or wind turbines are generating and save effortlessly. Shelly Pro 3EM provides real-time information about the efficiency of the solar and wind energy system, as well as historical data on how much energy has been generated and consumed every minute for the past 60 days.

## Shelly 3EM

Shelly 3EM - Saldieren von Werten. 66er; 7. November 2022 um 20:12; Geschlossen Unerledigt; 66er. Spezialist. 3,4k; 81k; 15k; 7. November 2022 um 20:12; Autor #1; Hallo HomematicFreunde. Ich darf Euch heute ein kleines Skript vorstellen, welches aus diesem Beitrag zur 3EM Kopplung von SparkyMaster und dem Beitrag bzw. der Frage von shellifeuer



## [Brico] Shelly 3EM: Medidor de energía y simple gestor de

Hace unos días me ha llegado el último producto de la familia Shelly. Se trata del modelo 3EM, un medidor de energía que incluye 3 pinzas de 120A Ya FOTOVOLTAICA em con las dos pinzas amperimetricas conectadas y ves que tienes un sobrante de energía de 500w en tu instalación solar, entonces haces una escena que le dices, cuando sobren

## Shelly EM Auto Toggle Based on Solar Panels ...

Shelly EM Auto Toggle Based on Solar Panels  
Production: P1: house consumption (e.g. "P1 = 1kW" => we are consuming 1kW)P2: solar panels production (e.g. "P2 = - 4kW" => we are producing 4kW) The electric heater ...



## Anker Solix Solarbank 2 E1600 Plus mit Shelly 3EM Anleitung

Fazit und Gesamteindruck ... Anker Solix hat es geschafft, den Shelly 3EM in die Anker App zu integrieren! Wie die Verbindung zwischen Anker Solix Solarbank 2 E1600 Plus und Anker Solix Solarbank 2 E1600 Pro mit dem Shelly 3EM oder Shelly Pro 3EM funktioniert, haben wir in dieser Anker Solix Solarbank 2 mit Shelly 3EM Anleitung Schritt für Schritt gezeigt und erklärt.

## Shelly Pro 3EM-400A

Keep track of how much energy your solar panels or wind turbines are generating and save effortlessly. Shelly Pro 3EM provides real-time information about the efficiency of the solar and wind energy system, as well as historical data on how much energy has been generated and consumed every minute for the past 60 days. This helps you control the



## Relay Shelly 3 EM

SHELLY 3 EM Electric energy meter in three-phase and single-phase circuits. Monitor the consumption of the entire installation or the electricity generated from solar panels. 3 independent single-phase circuits can also be monitored. Contactor control functionality allows



connection of an external power contactor to drive larger loads. Example of automation for saving in ...

## Shelly Pro 3EM-400 - Control Your Home With Smart ...

Shelly Pro 3EM-400 is a DIN rail mountable three-phase energy meter. Enhanced with all the gen2 firmware flexibility and LAN connectivity, it provides professional integrators with additional options for end-customer solutions. Shelly Pro 3EM ...



## Shelly 3EM

Shelly 3EM Smart 3-phase energy meter with contactor control Three independent measurement channels up to 120 A each  
 Contactor control (any size load it is rated for)  
 Reports power, voltage, current, overall energy, and power factor 365 days of internal memory in case Wi-Fi is not available Included 3x Current Transformers 120 A Easy control through the Shelly app, ...



## Shelly 3EM, Photovoltaik und Home Assistant: Richtig saldieren.

Vorraussetzung. Diese Anleitung geht davon aus, das eure Shelly 3EM korrekt in Betrieb ist und in eurem Netzwerk eingebunden ist. Ebenfalls setzt diese Anleitung voraus, dass im gleichen

Netzwerk Home Assistant installiert ist und dort bereits die Shelly 3EM mit der Shelly Integration eingebunden ist.. Schritt für Schritt Anleitung zum Saldieren



## Shelly 3EM - Control Your Home With Smart Devices

Shelly 3EM Downloads Manuals User and Safety Guide User and Safety Guide - Multi language Compliance Shelly 3EM multilingual EU declaration of conformity.pdf Shelly 3EM UK PSTI ACT Statement of compliance.pdf What is Shelly 3EM? The professional 3-phase energy meter Shelly 3EM can calculate 2-way consumption: produced

## Shelly Pro 3EM (120A) , WiFi & Bluetooth 3-Phase Smart Energy ...

Shelly Pro 3EM is a Wi-Fi-operated DIN-mountable 3-Phase Energy Meter with Wi-Fi, Bluetooth, and LAN connectivity. With an active energy measurement accuracy of 1%, Shelly Pro 3EM can be used to monitor the consumption of any home appliances, electric circuits, and office equipment individually. Package includes 3 pieces of 120A Current



## [Prezzo Shelly Pro 3EM](#)

Shelly Pro 3EM è un contatore di energia trifase montabile su guida DIN. Shelly Pro 3EM è il dispositivo che fa per te se hai bisogno di



monitorare il consumo o la produzione del tuo impianto trifase o di qualsiasi elettrodomestico, circuito elettrico e attrezzatura per ufficio. E' un dispositivo di serie PRO con chip [...]

## [Shelly 3EM WiFi 3 fazni merilnik](#)

Shelly 3EM je združljiv tako s sistemom Android kot iOS. Zascita pred prekomerno porabo. Shelly 3EM bo samodejno izklopil celoten tokokrog ce poraba ali energija dosežeta nastavljeno mejo. Urniki sončnega vzhoda/zahoda. Samodejno sledite soncu in vklopite / izklopite Shelly 3EM glede na ure sončnega vzhoda in sončnega zahoda. Tedenski



- IP65/IP55 OUTDOOR CABINET
- OUTDOOR CABINET WITH AIR CONDITIONER
- OUTDOOR ENERGY STORAGE CABINET
- 19 INCH

## **Shelly Pro 3EM - Control Your Home With Smart Devices**

Next-generation DIN-mountable 3-Phase Energy Meter Shelly Pro 3EM is a DIN rail mountable three-phase energy meter. Enhanced with all the gen2 firmware flexibility and LAN connectivity, it provides professional integrators with ...

## [Shelly PRO 3EM \(120A or 400A\)](#)

Shelly PRO 3EM is a professional DIN rail mountable three-phase energy meter. Enhanced with all the Shelly gen2 firmware flexibility and LAN connectivity, it can work standalone in a local LAN and/or Wi-Fi network. Use these capabilities to set exact parameters for HVAC, pool pumps, electric vehicle charging, etc - based on solar





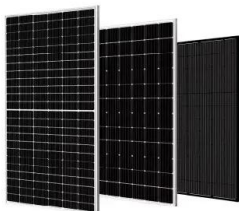
## Two Shelly 3EM for measuring solar production

Ok, I need help setting up my 2 Shelly 3EM devices. I have one set up in my power provider fuse box for the last 2 years. It works great by measuring power taken from the grid and power sent to the grid. I had to swap transformers from K-->L (grid to load) to L-->K where L is coming from th

## [Shelly Pro 3EM-400A](#)

Keep track of how much energy your solar panels or wind turbines are generating and save effortlessly. Shelly Pro 3EM provides real-time information about the efficiency of the solar and wind energy system, as well as historical data on

...



## Making Your Solar More Efficient with Shelly

By combining the power monitoring capabilities of the Shelly Plus 1PM with Shelly Pro 3EM which is able to oversee appliances, measure whole-house energy consumption, and track solar panel production, you can precisely align the electricity generated by your solar panels with your home's consumption patterns.

## [SolMate: Neue Kompatibilität mit Shelly!](#)

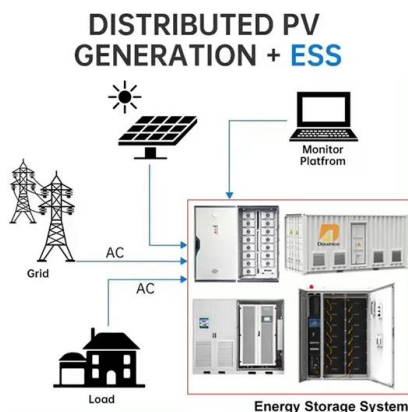
SolMate: Neues Update ermöglicht Kompatibilität mit Shelly Smart Meter Mit unserem neuesten Update der mySolMate-App erweitern wir die Möglichkeiten für eine noch intelligentere Energieverwaltung! Ab sofort ist unsere App mit

dem Shelly Smart Meter kompatibel. Dadurch kannst du deinen Energieverbrauch und die Energieproduktion noch detaillierter überwachen ...



### Shelly Pro 3EM - bremen-solar

Stromverbrauchsmessgerät, 3-phasig, WLAN-, Bluetooth- und LAN-Konnektivität zum Einbau in die Hausverteilung (Montage auf DIN-Schiene). Android und iOS Apps verfügbar. Bis 120A/260V pro Phase messbar, Genauigkeitsklasse B (1%, Wirkenergie), zeitliche Auflösung: 1 min Paket beinhaltet 3 Stk. 120A Stromwandler



Energy storage(KWH)

**102.4kWh**

Nominal voltage(Vdc)

**512V**

Outdoor All-in-one ESS cabinet

### Shelly 3EM

WiFi-operated professional 3-phase energy meter with contactor control Individually monitor the consumption of any of your home appliances, electric circuits and office equipment (lights, sockets, security systems, heating and cooling, etc.). Monitor consumption of your whole home or generated electricity from solar pa

Nominal Capacity  
**280Ah**  
Nominal Energy  
**50kW/100kWh**  
IP Grade  
**IP54**



### [Brico] Shelly 3EM: Medidor de energía y simple gestor de

Creo que ya lo comenté más arriba. El software del Shelly 3EM está pensado para trifásica y no tanto para monofásica con tres sondas, por lo que lo devolví y pedí un EM que no me llegó por la pandemia. Así que me pasé al Mirubee.

## Shelly 3EM

Der Energyzähler Shelly 3EM wird per LAN angeschlossen. Pro Phase können bis zu 120 Ampere / 230 Volt gemessen werden. Das Standard Dashboard kann hier herunter geladen werden. Es muss dann noch ins Grafana importiert werden. Port = 80. Achtung! Die Firmware muss Version 1.9.0 oder höher sein. Bei älteren Firmware Ständen fehlen zum Teil



## Contact Us

---

For catalog requests, pricing, or partnerships, please visit:  
<https://ian-solar.co.za>