

Solar Energy South Africa

Kamada power 9 6 powerwall Guinea



Kamada power 9 6 powerwall Guinea



Inge/UFO 9.6 kWh Powerwall Lithium ion Battery

INGE's Powerwall ESS adopts the latest HESS battery system. With rich experience and advanced techniques, the product has the features of the fashionable design, high energy, high power density, long service life, and ...

**LPR Series 19'
Rack Mounted**

Termék lista - SolarZone - Napelem rendszer telepítés kedvező áron

Cím: Iroda: 1097 Budapest, Vágóhíd utca 3. F
 épület 8/809 Raktár: 1097 Budapest, Kén utca
 8/a Adószám: 23307353-2-07 , Cégjegyzékszám:
 07-09-034670 Székhely: 8000 Székesfehérvár,
 Palotai u.



[Powerwall 3 DC System Sizing](#)

Powerwall 3 can be configured as up to a 11.5 kW AC rated inverter that can support up to a maximum DC system size of 20 kW.. 20 kW DC is the absolute maximum solar system size that Powerwall 3 can support.; Powerwall 3 has a boosting feature that can send 5 kW continuously from solar to the battery at the same time that 11.5 kW of solar is inverted to AC power, ...



Tesla da los primeros detalles de la nueva ...

Uno de los puntos más llamativos es que le Powerwall ha seguido adelgazando y creciendo en altura. Si en la primera generación se trataba de un diseño algo abombado, con una altura de 1.3 metros y una profundidad de 18 ...



Tesla Powerwall: 21 Things You Need to Know

[Related: How To Optimize Your Tesla Powerwall During a Power Outage] 21. Do Powerwalls have a warranty? Tesla offers a standard 10-year warranty to ensure your battery performs at 70% capacity. If your Powerwall loses more than 30% of its storage capacity within that 10-year span, the warranty fully covers it.

Powerwall+

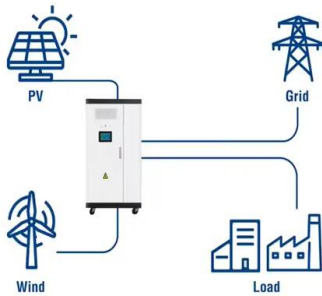
1 Values provided for 25°C (77°F), 3.3 kW charge/discharge power. 2 7.6 kW with sun / 5 kW no sun at power factor of 1. 3 Load start capability may vary. 4 Power factor rating at max real power. 5 Where the DC input current exceeds an MPPT rating, jumpers can be used to allow a single MPPT to intake additional DC current up to 26 A Imp / 38 A



[Powerwall 2 VS Powerwall Plus](#)

Power. One of the main differences between these two products is in their power output. The storage capacity of the Powerwall+ is the same as the Powerwall 2 at 13.5kWh, but the Powerwall + power rating has substantially increased from 5 kW to 9.6 kW continuous power when full sun is available in off-grid mode. This

Utility-Scale ESS solutions



means that the Powerwall+ ...

Dyness Powerwall 10 kWh

High Power Output & Usable Energy Ratio
 Dyness Battery Storage System has high output power and usable energy ratio, the system can reach 1C continuously and 2C at peak to support critical requirement such as A/C. They can reach 95% usable ratio.



Tesla Powerwall ????????

Powerwall ??????????????,100%
 ??????????????????,75%
 ??????????????????,????????????????? ??? Tesla Powerwall
 ??,??,???????

Today is my best yet on a 9.6kwh panel + powerwall. Should I

I'm in SoCal as well and yesterday was definitely the best day I ever had from end of April 2023, my installation DD. I'm quite amazed you generating as much facing east compare to mine 7.6kW +2PWs facing close to perfect south with 15 panels.





A Review: Tesla Solar Roof and Powerwall , 2022 Referral Code

Power Output: Powerwall: Powerwall+:
 Continuous Power: 5 kW: On-Grid: 7.6 kW with peak sun, 5.8 kW without sun. Off-Grid: 9.6 kW with peak sun, 7 kW without sun: Peak Power: 7 kW: Off-Grid: 22 kW with peak sun, 10 kW without sun: The Powerwall+ has a built-in inverter, while the normal Powerwall needs an external one. The additional features of

Solar Energy Battery, Lithium Battery For Home

Kamada offers customized battery solutions with expertise in lithium battery research and development. We support RS485, RS232, CANBUS, Bluetooth, and stay updated with the latest advancements. Get excellent engineering and rich ...



[Powerwall solar lithium battery](#)

Power your residential or commercial solar system with yilink powerwall solar lithium batteries. Wide applications for off grid, hybrid solar system. Yilink iPower Seires Powerwall is a new generation of solar lithium battery ...

Powerwall 48V100Ah 150Ah 200Ah 4.8Kwh 7.2Kwh 9.6Kwh

...

Powerwall 48V100Ah 150Ah 200Ah 4.8Kwh 7.2Kwh 9.6Kwh LifePO4 Lithium Battery. iPower is specially tailored for energy storage system, it

offers a greater efficiency, higher reliability, intelligent battery management system, intelligent battery monitoring system, long lifespan to your solar system. Output Power(kW)
 4.8. 4.8. 4.8. Net Weight



Tesla Powerwall Plus vs Powerwall 2: Difference, Capacity, Specs

Additionally, the Powerwall is always on alert for power outages, automatically kicking in to supply your home with reliable backup power and effectively becoming the primary home backup energy source when the grid is down. This capability ensures your home remains powered under all circumstances. Powerwall vs Powerwall Plus

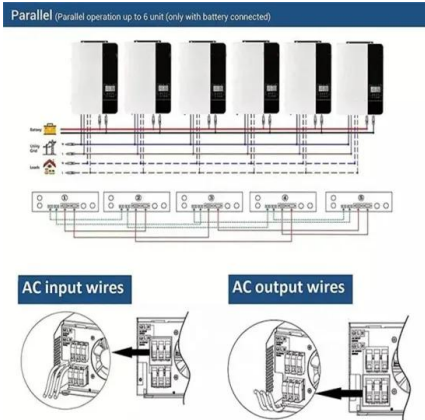
¿Cuánto Cuesta Realmente una Tesla Powerwall en 2024

Cuántas Tesla Powerwalls necesitas instalar. La mayoría de los propietarios de viviendas necesitan entre una y dos baterías Powerwall para poder usar los electrodomésticos esenciales durante un corte de energía. El costo de cada Powerwall disminuye cuantas más unidades se instalen, ya que los costos de instalación y de los accesorios se reparten entre ...



Kamada 9.6 kWh powerwall elektromos tároló

A KMD Powerwall Battery fejlett lítium-



ferrofoszfát (LFP) kémiaát használ a hatékonyabb, biztonságosabb és megbízhatóbb energiatárolás érdekében.

Tesla Powerwall Price, Specs, and Review , Choose Energy

Tesla Powerwall continuous power rating. You should also make note of the continuous power rating, which designates the maximum power output that the unit can generate under normal conditions. The Tesla Powerwall offers a maximum continuous power rating of 7.6 kW with full sun and 5.8 kW with no sun on the grid. For consumers who live off the



HomeGrid Energy Stack'd Series 9.6 kWh , EnergySage

How long can you run your house on a Tesla Powerwall? How have solar panel cost and efficiency changed over time? Backup power. Backup power guide This allows for easy future expansion and a range of 9.6 kWh to 38.4 kWh per Stack Each 4.8 kWh module is warranted for 14

HomeGrid Energy Stack'd Series 9.6 kWh , EnergySage

This allows for easy future expansion and a range of 9.6 kWh to 38.4 kWh per Stack Each 4.8 kWh module is warranted for 14 How long can you run your house on a Tesla Powerwall? How

have solar panel cost and efficiency changed over time? The key characteristics of a battery are the power output, usable capacity and efficiency with which

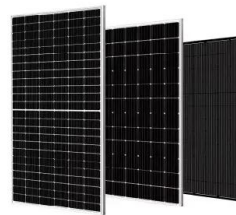


Power / Current Limit Feature for Powerwall 3

Some utility interconnection software systems do not provide a way to account for the lower power rating of Powerwall 3. As a result, despite the inverter operating at a lower power rating and satisfying permitting requirements, the utility will evaluate Powerwall 3 at full power (11.5 kW) instead of the lower value. This has the potential to cause the following complicatio

LG Energy Solution Vs. Tesla Powerwall (Which battery is

Tesla Powerwall. Tesla inc. is a US-based electric car manufacturer founded by Elon Musk in 2003. The company builds advanced electric cars and produces lithium batteries through its subsidiary Tesla Energy.. Since 2015, it has commercialized the Tesla Powerwall, a plug-and-play domestic Energy Storage Solution (ESS).. Currently, Tesla only offers one ...



Tesla's Powerwall 3 has a higher peak output for off-grid living

Tesla's planning to upgrade Powerwall with



Powerwall 3 with an upgraded 9.6 kW peak output (from 7 kW) and the same 13.5 kWh battery capacity. This new. Discover View All Categories Explore over 300 categories and sub-categories. From tech to sports and everything in between. Tesla's Powerwall 3 can power an entire home from a small

SUNPAL LITHIUM BATTERY

Each battery with independent BMS system manages power output smartly and effectively
 Modularization Modular design gives the end customers the power of choice of capacity
 Deliver up to 140KW with single max module (10.24KWh) at 14pcs parallel connection Easy to install and use Just plug and play to minimize the installation time and



Powerwall solar lithium battery

Power your residential or commercial solar system with yilink powerwall solar lithium batteries. Wide applications for off grid, hybrid solar system. Yilink iPower Seires Powerwall is a new generation of solar lithium battery composed of non-toxic and harmless lithium iron phosphate chemical, high consistency first-class LFP battery cell

AC-Coupled Solar System Sizing

If the system is installed with Powerwall 3 Expansion unit(s), a maximum of 10 kW AC per Powerwall 3 is allowed in the backup circuit. This means that a system with (1) Powerwall 3 and up to (3) Expansion units can have up to 10 kW AC-coupled solar in the backup circuit, and a system with (2) Powerwall 3 units and up to (3)

Expansion units can have up to 17.68 kW AC ...



Akkumulátor - SolarZone - Napelem rendszer telepítés kedvezo ...

Cím: Iroda: 1097 Budapest, Vágóhíd utca 3. F
épület 8/809 Raktár: 1097 Budapest, Kén utca
8/a Adószám: 23307353-2-07 , Cégjegyzékszám:
07-09-034670 Székhely: 8000 Székesfehérvár,
Palotai u.

Contact Us

For catalog requests, pricing, or partnerships, please visit:
<https://ian-solar.co.za>