

**Solar Energy South Africa**

# **Photovoltaic Panel Controller Troubleshooting**



## Overview

---

When troubleshooting common solar charge controller issues, it's important to promptly identify and address any potential problems to guarantee system efficiency and performance. One prevalent issue is related to the solar charge controller's voltage regulation capabilities. If the controller fails to regulate the.

How do battery voltage fluctuations impact the performance of a solar panel system?

Fluctuating battery voltage, stemming from issues like inadequate sunlight exposure or loose connections, can.

Overcharging problems in solar charge controllers can substantially impact battery life and pose potential safety hazards. When a controller fails to regulate the charging current properly, it can lead to excessive voltage being.

Inspecting the wiring, connections, and components for signs of damage or overheating is essential when troubleshooting a short circuit in a solar charge controller. To.

Undercharging concerns in solar systems can lead to diminished battery capacity and performance. When a solar system undercharges, the batteries may not receive sufficient energy.

Troubleshooting PV panels Trace out the individual branch wiring backward from the concentrator. Check the entire system visually for any obvious damage or accidental disconnections. Check the combiner box. Watch for low voltage and check wiring connections. Test the open circuit voltage (Voc). Inspect the modules for obstructions. What is solar charge controller troubleshooting?

Solar charge controller troubleshooting usually entails checking if the solar panel and battery are correctly connected to the controller, inspecting for any signs of damage or wear and tear, and reviewing if the settings are appropriately configured.

How do I troubleshoot a high voltage solar panel?

To troubleshoot, check for shading on the panels, faulty wiring connections, or incorrect settings on the charge controller that could be causing the high voltage output. Addressing high solar panel output voltage promptly is essential to prevent potential damage to the system components and guarantee performance.

What should I do if my solar panel won't charge?

**Adjust Controller Settings:** Check the controller's settings and ensure they are appropriate for your specific battery's charging requirements. This includes setting the correct voltage limits and charge rates. **Optimize Solar Panel Placement:** Reassess the orientation and tilt of your solar panels.

Why is my MPPT solar panel generating high voltage?

This issue may stem from a malfunction in the MPPT solar charge controller or the solar panels themselves. To troubleshoot, check for shading on the panels, faulty wiring connections, or incorrect settings on the charge controller that could be causing the high voltage output.

How do I fix a faulty solar controller?

**Reset the Controller:** Sometimes, simply resetting the controller can resolve the issue. Disconnect the controller from both the battery and the solar panels, wait a few minutes, then reconnect, starting with the battery first and then the solar panels. 3.

Can a solar charge controller be repaired?

Now that we've identified some common problems let's step into the realm of solar charge controller repair. You can reset many solar controllers by disconnecting it from both the solar panels and the batteries, then reconnecting the batteries first and the panels second.

## Photovoltaic Panel Controller Troubleshooting

---



### MPPT Solar Charge Controller Troubleshooting

Then, disconnect the charge controller from the battery and solar panels. After that, Wait for 5-10 minutes to ensure that the remaining charge is completely discharged. Now, reconnect the solar panels and battery to the ...

### Solar Charge Controller Troubleshooting - Solair World

To ensure your solar panel charge controller functions smoothly, consider the following tips: Place it in a cool, dry area to avoid overheating, which is a common cause of failure in these devices. Steer clear of locations with direct sunlight or ...



**TAX FREE**

**Product Model**  
 HJ-ESS-215A(100KW/215KWh)  
 HJ-ESS-115A(50KW/115KWh)

**Dimensions**  
 1600\*1280\*2200mm  
 1600\*1200\*2000mm

**Rated Battery Capacity**  
 215KWH/115KWH

**Battery Cooling Method**  
 Air Cooled/Liquid Cooled

### [6. Troubleshooting Guide](#)

Navigate to the controller settings and then to "product info". Re-enable Bluetooth. Check if the controller is powered-up. Bluetooth is active as soon as the solar charger is powered-up. Check that Bluetooth is in range. In open ...

### Solar Charge Controller Troubleshooting: A ...

Solar charge controller troubleshooting usually entails checking if the solar panel and battery are correctly connected to the controller,

inspecting for any signs of damage or wear and tear, and reviewing if the settings are ...

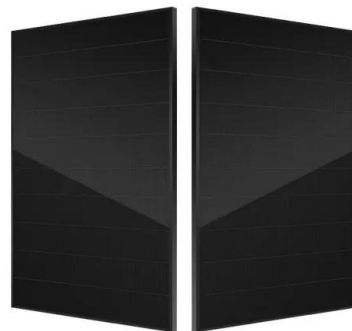


## How to Troubleshoot and Repair Your MPPT Solar Charge Controller

3. Battery Not Charging: Confirm that the battery is connected correctly and not damaged. Verify the solar panel's voltage is within the controller's operating range. 4. Erratic Charging Patterns: ...

## Solar Charge Controller Display Not Working? Here's ...

No Solar Power Input. Secondly, the issue could also arise due to insufficiency of solar power input. The display won't wake up if the photovoltaic panels are not capturing enough sunlight, or if there's an issue with the wiring ...



## Solar Charger Not Charging? Troubleshooting Tips ...

Ensure that the solar panel is clean and placed correctly under direct sunlight. If the problem persists, it may be necessary to contact customer support or seek professional help. Troubleshooting Solar Charge Controller ...

## Solar system fault finding guide & solutions

Solar panel fault-finding guide including examples and how to inspect and troubleshoot poorly performing solar systems. Common issues include solar cells shaded by dirt, leaves or mould. will already have a CT ...



### [Fault finding on Solar PV Panel systems](#)

Naked Solar's guide to fault finding and trouble shooting common problems with solar panel systems and set ups. Naked Solar's guide to fault finding and trouble shooting common problems with solar panel systems and set ups. UK Solar ...

## Solar Charge Controller Trouble Shooting Guide

Before you start troubleshooting your solar charge controller, it is important to know how to determine its current status. If your solar panels are not charging at all, you may need to reset the controller to its factory settings. ...



## Contact Us

---

For catalog requests, pricing, or partnerships, please visit:  
<https://ian-solar.co.za>