

## Solar Energy South Africa

**Photovoltaic bracket is horizontally placed in north and south**



## Overview

---

If we observe the sun, we'll notice that it moves from East to West with a parabolic trajectory; to define the direction of the sun's rays, with respect to the photovoltaic module surfaces, we need to know two fundamental angles: 1. the azimuth angle; 2. the tilt angle. The Azimuth angle, refers to the orientation of the.

The higher energy efficiency of a photovoltaic system doesn't only originate from the quality of the system, but also from the orientation and inclination of the photovoltaic panels. A photovoltaic system reaches its maximum.

The orientation of the photovoltaic panels is therefore crucial to maximize the yield of the photovoltaic system. To optimize the solar arrangement.

Which direction should solar panels be positioned?

When you position solar panels based on true south and the azimuth angle (the sun's angle in relation to true north and true south), you get the most optimized orientation for production and efficiency. Solar Tip: If you're not sure which direction your roof faces, you can look your address up on Google Maps.

What is the difference between horizontal and vertical solar panels?

Less Sunlight Exposure- Compared to horizontal solar panels, vertical orientation receives less sunlight even in the middle of the day. Complex Installation- Installing vertical solar panels is a toilsome process as it requires skilled labour and custom racking systems.

What is vertical solar panel installation?

Vertical solar panel installation is an arrangement of panels that are mounted in a vertical orientation on a rooftop or other structures. This kind of installation is also known as portrait orientation, where panels are positioned flat parallel to the ground, often perpendicular to the roof's surface.

Why does solar panel orientation and angle matter in a solar power system?

Prior to understanding why solar panel orientation and angle matter in a solar power system, we need to know how a solar panel collects energy from the sun. Solar panel cells only collect a specific wavelength during absorbing radiant energy from the sun.

What is the orientation of a solar panel?

The orientation of a solar panel is also called its azimuth, which is the horizontal angle compared to true north (0 degrees). North-facing rooftops are traditionally considered unsuitable for solar panels in the UK, but this isn't necessarily the case anymore - solar panel technology has come a long way in the past couple of decades.

Should solar panels face north or South?

All of us in sunny California fall into this category and should avoid panel placement facing North. When you position solar panels based on true south and the azimuth angle (the sun's angle in relation to true north and true south), you get the most optimized orientation for production and efficiency.

## Photovoltaic bracket is horizontally placed in north and south

---

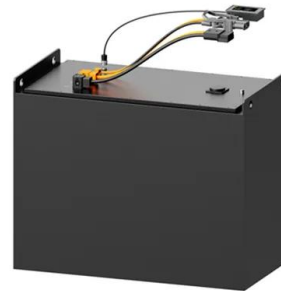


### Solar panel inclination angle, location and orientation

To take maximum advantage of solar radiation, it is advisable to orient the solar panels towards the south if we are in the northern hemisphere and the north if we are in the southern hemisphere. Solar panels facing south or ...

### Selecting the Correct Approach to Install Solar Panels: ...

Can solar panels be placed horizontally? You can place solar panels horizontally on rooftops, as this orientation is a common choice for solar installations to maximize sunlight exposure. Residential



### Brackets for Fixing Photovoltaic and Solar Panels on ...

After years of study and after having gained specialized experience in the field with over 5,000 customers for whom we have produced more than 100,000 brackets, our technicians have created the "perfect bracket" for fixing ...

### What Solar Panel Orientation is best in the UK?

As we're in the northern hemisphere the best solar panel orientation is obviously south, but:

What happens if your roof isn't facing south?  
 What difference does it make if you're only a little off south OR a lot off south?



### Brackets for solar panels: supports for fixing the photovoltaic ...

This is an aluminum plate with an EPDM seal, complete with stainless steel module attachment elements. This kit for mounting photovoltaic panels on corrugated sheet metal is particularly ...



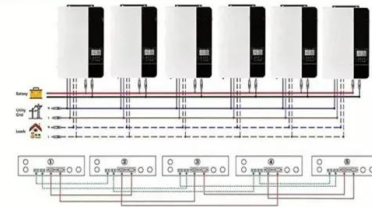
### 114KWh ESS



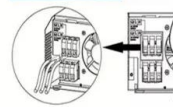
### Which Is More Important: Solar Panel Orientation or ...

When you position solar panels based on true south and the azimuth angle (the sun's angle in relation to true north and true south), you get the most optimized orientation for production and efficiency.

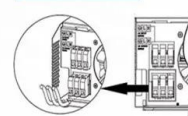
Parallel (Parallel operation up to 6 unit (only with battery connected))



AC input wires



AC output wires



### Solar Orientation For Solar Arrays and Panels

Orientation is typically expressed as the angle a solar device faces off of due south. For example, a PV array sitting on a house facing due south (corrected for magnetic declination) would have an azimuth of 180°. ...

## How to Find the Best Orientation and Angle of Solar ...

Solar panel orientation refers to the cardinal direction the panel is facing: north, south, east or west. To be more specific, the orientation refers to the horizontal direction of solar panels in relation to the equator. It is the true ...



## What's the Best Angle for Solar Panels? , EnergySage

South-facing panels give you the most bang for your buck because the sun crosses the sky in the south, giving the panels more sunlight. "We tell people that a solar panel costs the same amount regardless of what ...

## Estimating the Optimum Tilt Angles for South-Facing ...

The optimum tilt angle of solar panels or collectors is crucial when determining parameters that affect the performance of those panels. A mathematical model is used for determining the optimum tilt angle and for ...



## The best angle and direction for solar panels [UK, 2024]

Solar panels should ideally face south in the UK, though arrays that face east or west can also be extremely productive. North-facing solar panels aren't usually worth installing. On the other hand, panels that point towards the ...

## A Full Guide to Photovoltaic Array Design and ...

Installing a photovoltaic (PV) array starts with selecting a suitable mounting structure, which will support the solar panels and place them at an optimal angle to receive sunlight. The choice of mounting structure ...



## Photovoltaic module installation: horizontal vs. vertical

As the name implies, horizontal module row means that the module is mounted on the bracket with the long side parallel to the east-west direction, while vertical module row means that the short side is parallel to the east-west direction.

## Contact Us

For catalog requests, pricing, or partnerships, please visit:  
<https://ian-solar.co.za>