

Solar Energy South Africa

Photovoltaic panel models and sizes



Overview

As you can imagine, you can get almost any size solar panel you desire, from single tiles to ones that cover the entire roof. There are even companies that will craft custom and bespoke solar panels for your roof. However, if you have a particularly small roof there's no need to be too worried as you can still install solar.

The majority of solar panels for sale in the UK average around 350 watts (W) in power for residential units. However, it's quite easy to get your.

If you have a small home or want to power mobile vehicles like caravans and campervans, the good news is that there are many smaller-sized systems available. This includes small solar panels, as well as battery storage.

Below we have detailed some of the most common solar panel installations in the UK for domestic properties. Please note that both the costs and final power outputs are rough estimates and it's obviously not possible to know these as.

For residential usage, two predominant sizes are popularly used: 60-cell panels, measuring approximately 65 by 39 inches (165 x 99 cm), typically produce between 280-320 watts. So, these models require about 17.6 square feet (1.63 square meters) of space. 72-cell panels, around 77 by 39 inches (195 x 99 cm), generate a more potent 340-400 watts. These ~400W models require 20.8 square feet (1.93 square meters). What is a photovoltaic (PV) solar panel?

This solar panel is a photovoltaic (PV) panel that offers several advantages over the standard solar panel size, making them a good alternative. Some of the benefits of this solar panel type include: Sleek weight and flexibility - because of its weight, this solar panel is easier to install in different locations.

What is a solar panel size?

Refers to the total amount of power a solar panel can generate over a period of time. This is usually calculated by multiplying the panel voltage by the amperage. Solar cell dimensions are typically around 189 x 100 x 3.99cm, while solar panel dimensions are usually between 1.6m² to 2m².

What are the dimensions of a residential solar panel in the UK?

The typical dimensions of a residential solar panel in the UK is 189cm x 100cm x 3.99cm (length, width and height) Solar panel weight is a crucial factor to consider when planning a rooftop solar installation. The weight of the panels, along with the mounting equipment, adds a significant load to your roof structure.

What size solar panel should I buy in the UK?

Nevertheless, the typical size of a residential solar panel in the UK is 250W to 450W. It's important to note that when considering solar panels for your home or business, it's recommended to focus primarily on the wattage or power output rather than the physical dimensions.

Is solar panel size the same as solar array size?

As such, solar panel size shouldn't be confused with solar array (or, if you prefer, solar system) size.

What size solar panel do I Need?

The most common solar panel sizes for residential installations are between 250W and 400W, while larger commercial installations may use panels up to 500W or more. The size of a solar panel affects its efficiency, with larger panels generally being more efficient but also more expensive and heavier.

Photovoltaic panel models and sizes



Standard Solar Panel Sizes And Wattages (100W ...

96-cell solar panel size. The dimensions of 96-cell solar panels are as follows: 41.5 inches long, and 63 inches wide. That's a 63×41.5 solar panel. This form is a bit shorter but wider. This is the typical classification of solar panel sizes ...

Guide to Solar Panel Sizes & Dimensions (November ...

Some common solar panel system sizes include a 3kW solar panel system, a 4 kilowatt solar panel system and a 5kW solar panels. For instance, a typical 2kW solar panel system suited for 1-3 people will need ...



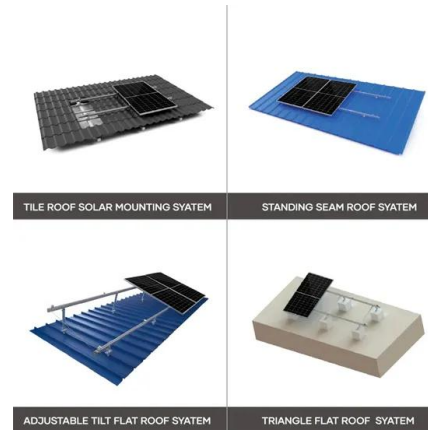
Choosing the Right Fit: Understanding Solar Panel Sizes in the UK

Find Out What Solar Panel Sizes You Need in 4 Steps. First, calculate the number of solar panels required based on the solar array size in kW and panel output in watts. Typically, the output is ...

Standard Solar Panel Sizes and Dimensions

The number and efficiency of the solar cells a solar panel contains determines the wattage rating. A Higher-wattage solar panel generally

has larger dimensions. Moreover, they incorporate more solar cells to produce ...



Comprehensive Guide to Solar Panel Types

In general, given the same physical footprint, conventional crystalline panels output more power than a thin-film panel of the same size. Solar Panel Types by Cost Monocrystalline panels (or modules as they are technically known) carry ...

How big is a solar panel? A guide to the different sizes and dimensions

For example, the equivalent of a 60 cell solar panel is a 120 half-cut cell solar panel. The equivalent of a 72 cell solar panel is a 144 half-cut cell solar panel. 120 half-cut cell ...



1mwh (500kw/1mw)
 AIR COOLING
 ENERGY STORAGE CONTAINER



Photovoltaic (PV) Systems

You can include PV panels in your model by following the instructions below. Position and size PV panels by following instructions in the Adding Solar Collectors topic. To access the properties of the PV panel first navigate to the ...

Contact Us

For catalog requests, pricing, or partnerships, please visit:
<https://ian-solar.co.za>