

## Solar Energy South Africa

# Solar power station material



## Overview

---

The solar power plant is also known as the Photovoltaic (PV) power plant. It is a large-scale PV plant designed to produce bulk electrical power from solar radiation. The solar power plant uses solar energy to produce electrical power. Therefore, it is a conventional power plant. Solar energy can be used directly to produce.

The major components of the solar photovoltaic system are listed below. 1. Photovoltaic (PV) panel 2. Inverter 3. Energy storage devices 4. Charge controller 5. System balancing component Photovoltaic (PV) Panel.

A solar cell is nothing but a PN junction. The plot of short-circuit current (ISC) and open-circuit voltage (VOC) describes the performance of the solar cell. This plot is shown in the figure below.

The solar panels are classified into three major types; 1. Monocrystalline Solar Panels 2. Polycrystalline Solar Panels 3. Thin-film Solar Panels.

The solar power plant is classified into two types according to the way load is connected. 1. Standalone system 2. Grid-connected system

## Solar power station material

---



### [Photovoltaic power station](#)

The 40.5 MW Jännersdorf Solar Park in Prignitz, Germany. A photovoltaic power station, also known as a solar park, solar farm, or solar power plant, is a large-scale grid-connected photovoltaic power system (PV system) designed for the ...

### What is Solar Power Plant: How It Works, Types and ...

So, let's see what a solar thermal power plant is. Solar Thermal Power Plant. Solar thermal power plants collect sunlight in a way that helps to generate electricity. There are three types- linear, solar dish power ...



### Key Components of a Solar Power Plant: A Detailed ...

Components of Solar Power Plant: Inverters and Their Functionality. Inverters link solar panels to the grid, turning sunlight into usable power. From simple devices in the 1800s to today's complex units, they've ...



### AFERIY UK: Portable Power Stations, Solar Generator Kits, Solar ...

Shop portable power stations, solar generator kits, solar panels. Click to learn more. P010

800W Power Station + 100W Solar Panel Notify me. Monocrystalline Silicon Solar Cells; ...

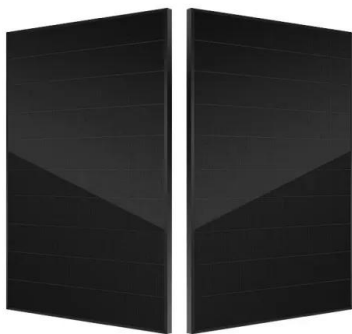


## What is a solar power plant? How it works and types

The operation of a solar photovoltaic plant is based on photons and light energy from the sun's rays. The types of solar panels used in these types of facilities are also different. While solar thermal plants use collectors, photovoltaic power ...

## Solar Power Plants: Types, Components and Working ...

A concentrated solar power plant is a large-scale CSP system that uses mirrors or lenses to concentrate sunlight onto a receiver that heats a fluid that drives a turbine or engine to generate electricity. A concentrated ...



## Solar Power Plant: Types, technology & all about solar power ...

A solar power plant is an arrangement of various solar components including solar panel to absorb and convert sunlight into electricity, a solar inverter to convert the electricity from DC to ...

## Contact Us

---

For catalog requests, pricing, or partnerships, please visit:  
<https://ian-solar.co.za>