

Solar Energy South Africa

South Georgia and South Sandwich Islands modular solar



Overview

What is the ccTLD for South Georgia and the South Sandwich Islands?

The Internet country code top-level domain (ccTLD) for South Georgia and the South Sandwich Islands is .gs. The parts of the islands that are not permanently covered in snow or ice are part of the Scotia Sea Islands tundra ecoregion.

Who owns South Georgia and the South Sandwich Islands?

The United Kingdom claimed sovereignty over South Georgia in 1775 and the South Sandwich Islands in 1908. The territory of "South Georgia and the South Sandwich Islands" was formed in 1985; previously, it had been governed as part of the Falkland Islands Dependencies.

Are South Georgia and the South Sandwich Islands mountainous?

South Georgia and the South Sandwich Islands are a collection of islands in the South Atlantic Ocean. Most of the islands, rising steeply from the sea, are rugged and mountainous. At higher elevations, the islands are permanently covered with ice and snow.

Is South Georgia a small island?

It is a remote and inhospitable collection of islands, consisting of South Georgia and a chain of smaller islands known as the South Sandwich Islands. South Georgia is 165 kilometres (103 mi) long and 35 kilometres (22 mi) wide and is by far the largest island in the territory.

Are the South Georgia Islands mountainous?

Most of the islands, rising steeply from the sea, are rugged and mountainous. At higher elevations, the islands are permanently covered with ice and snow. The South Georgia Group lies about 1,390 kilometres (860 mi; 750 nmi) east-southeast of the Falkland Islands, at 54°–55°S, 36°–38°W.

When did South Georgia become a part of the Falkland Islands?

The territory of "South Georgia and the South Sandwich Islands" was formed in 1985; previously, it had been governed as part of the Falkland Islands Dependencies. Argentina claimed South Georgia in 1927 and claimed the South Sandwich Islands in 1938.

South Georgia and South Sandwich Islands modular solar



????????????

????????????(?: South Georgia and the South Sandwich Islands,??? SGSSI)????????????????????
 ?????????????????????,???????????????????? ?????????????
 ...

????????????

????????????(?: South Georgia and the South Sandwich Islands,??? SGSSI)????????????????????
 ?????????????????????,???????????????????? ?????????????
 ...



South Georgia and the South Sandwich Islands

South Georgia and the South Sandwich Islands (SGSSI) is a British Overseas Territory in the southern Atlantic Ocean. It is a remote and inhospitable collection of islands, consisting of South Georgia and a chain of smaller islands known ...

South Georgia and the South Sandwich Islands

South Georgia and the South Sandwich Islands are a chain of Subantarctic islands in the Southern Ocean surrounding Antarctica. The

islands are an overseas territory of the United Kingdom: they have no permanent residents and their administration is physically based in the Falklands, but since 1985 they have been a separate jurisdiction.



Islas Georgias del Sur y Sandwich del Sur

Georgias del Sur (South Georgia): 1944, 1962-1979. Dependencias de las islas Malvinas (Falkland Islands Dependencies): 1946-1961, 1980-1985 Georgias y Sandwich del Sur (South Georgia and South Sandwich Islands): 1986 - actualidad. Puntos poblados históricos y modernos en la isla San Pedro. No hay población nativa en las islas.

[South Georgia Island Population 2024](#)

South Georgia, sometimes referred to as Isla San Pedro, is an island that is located in the South Atlantic Ocean and is part of the British administration of the South Sandwich Islands and part of the British Overseas Territory of South Georgia. The island is located 1400km from the Falkland Islands and is about 170km long and 35km wide.



South Georgia and the South Sandwich Islands

South Georgia and the South Sandwich Islands. Published: September 2018. Citation: UNEP-WCMC. 2018, A review of terrestrial protected



areas: South Georgia and the South Sandwich Islands. Cambridge, UK. The UN Environment World Conservation Monitoring Centre (UNEP-WCMC) is the specialist biodiversity assessment centre of

Government of South Georgia & the South Sandwich Islands

Government of South Georgia & the South Sandwich Islands , 560 followers on LinkedIn. Leo Terram Propriam Protegat , As a United Kingdom Overseas Territory (UKOT), South Georgia & the South Sandwich Islands is an example of world-leading evidence-based sustainable management that has delivered globally significant environmental recovery.



South Georgia and the South Sandwich Islands

Closeup map of the South Sandwich Islands
NASA satellite photograph of Montagu Island. The South Sandwich Islands comprise 11 mostly volcanic islands (excluding tiny satellite islands and offshore rocks), with some active volcanoes. They form an island arc running north-south in the region 56°18'-59°27'S, 26°23'-28°08'W, between about 350 and 500 mi (300 and 430 nmi; ...

South Georgia, Antarctica & South Sandwich Islands ...

Summary. Welcome to our South Georgia & Antarctic Odyssey featuring the South Sandwich

Islands expedition.. On this epic voyage, not only will you explore the famed white continent, discover the Falklands~Malvinas, ...



Paving the way: are solar sidewalks a viable way to decarbonise our

The walkable, non-slip solar tiles are mounted on recycled plastic paving slabs that comprise recycled plastic and glass, as well as debris - just 1m² of solar paving equals the plastic recycled equivalent of 400 PET bottles. The modular design makes installation fast and easy to execute, similar to conventional tiling.

South Georgia and South Sandwich Islands , World Factbook

note: includes Shag Rocks, Black Rock, Clerke Rocks, South Georgia Island, Bird Island, and the South Sandwich Islands, which consist of 11 islands country comparison to the world: 177. Area - comparative . slightly larger than Rhode Island. Land boundaries . 0 km. Coastline . NA. Maritime claims . territorial sea: 12nm exclusive fishing zone



South Georgia, Antarctica & South Sandwich Islands Cruise

Summary. Welcome to our South Georgia &

Antarctic Odyssey featuring the South Sandwich Islands expedition.. On this epic voyage, not only will you explore the famed white continent, discover the Falklands~Malvinas, encounter the wildlife haven in South Georgia, you will also sail to the South Sandwich Islands, a chain of seldom-visited volcanic islands located 740 km (460 ...



Fisheries Overview - Government of South Georgia & the South Sandwich

Krill at South Georgia & the South Sandwich Islands are not self-sustaining but dependent on the northerly movement of krill in the currents of the Southern Ocean from their spawning grounds under the ice in the Antarctic Peninsula and Weddell Sea. Krill reproduction is highly dependent on sea ice conditions and hence environmental factors.



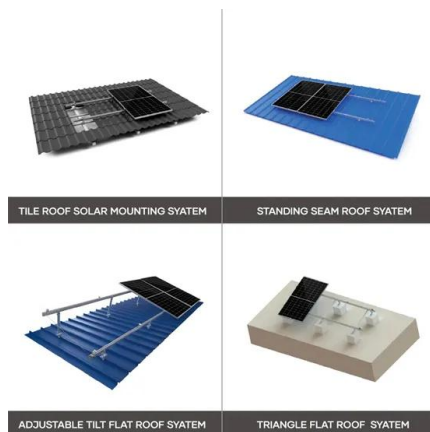
South Georgia and the South Sandwich Islands

British overseas territory in the Southern Atlantic Ocean. This page was last edited on 27 November 2024, at 11:44. All structured data from the main, Property, Lexeme, and EntitySchema namespaces is available under the Creative Commons CC0 License; text in the other namespaces is available under the Creative Commons Attribution-ShareAlike License; ...

South Georgia and the South Sandwich Islands Tourist Visa

...

If you're considering exploring South Georgia and the South Sandwich Islands beyond the usual tourist spots, our comprehensive guide on South Georgia and the South Sandwich Islands tourist visa offers deeper insights and broader options for travelers of different nationalities. For those transiting through other countries en route to South



South Georgia and the South Sandwich Islands

South Georgia and the South Sandwich Islands
 Basic statistics Current diversification (number of products) 57 Potential new products more complex (percentage) 44 Potential new products 1,196 Export opportunity in more complex products (percentage) 9 Potential new products more complex than the country's average 525

South Georgia and the South Sandwich Islands

South Georgia and the South Sandwich Islands are a chain of Subantarctic islands in the Southern Ocean surrounding Antarctica. The islands are an overseas territory of the United Kingdom: they have no permanent residents ...



The Best 10 Solar Inverter Manufacturers

For future-focused solar power platforms, Fimer empowers possibilities. Conclusion. With solar racing towards terawatt-scale generation globally, these top solar PV inverter manufacturers supply the intelligent electronics and reliability needed for new milestones in renewable energy.

??????

?????(?:South Georgia and The South Sandwich Islands,?:SGSSI),????????????,????????????????56 °18?-59°30????26°-28°30????,????????????????2, 000????????????????????,????????310????



[Südgeorgien - Wikipedia](#)

Südgeorgien (englisch: South Georgia, spanisch: Isla San Pedro oder Georgia del Sur) ist sowohl der Name einer einzelnen Insel als auch die Bezeichnung der Inselgruppe, zu der sie gehört. Das Gebiet zählt politisch zum britischen Überseegebiet Südgeorgien und die Südlichen Sandwichinseln und wird, wie die Falklandinseln, von Argentinien beansprucht.

South Georgia and South Sandwich Islands

Location: Shag Rocks general pelagic--over 2 miles offshore South Georgia and South Sandwich Islands. Macaroni Penguin Eudyptes chrysolophus # Count: X. Date: 10 Dec 2024. Observer: Kevin Coburn. Location: Hercules Bay South Georgia and South Sandwich Islands. All New Species. Recent Checklists



South Georgia and the South Sandwich Islands

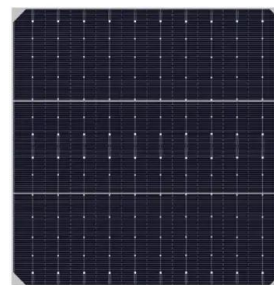
South Georgia and the South Sandwich Islands Cruises to Antarctica, Polar Travel With Cool Antarctica and Antarctica Travels Notes * Prices are per person. the lowest price is usually for



triple occupancy in a basic cabin, the highest for double occupancy in the best available suite. Options such as kayaking are usually booked when the cruise is booked, they may be at ...

South Georgia and the South Sandwich Islands Sunrise Sunset ...

This page shows the sunrise and sunset times in South Georgia and the South Sandwich Islands, including beautiful sunrise or sunset photos, local current time, timezone, longitude, latitude and live map.



Südgeorgien und die Südlichen Sandwichinseln - Wikipedia

Südgeorgien und die Südlichen Sandwichinseln (von der Inselregierung verwendete Abkürzung SGSSI [1]) sind ein britisches Überseegebiet im Südatlantik, das aus Südgeorgien und den Südlichen Sandwichinseln besteht. Die Inseln sind 3677 km vom Südpol entfernt. Da sie nördlich des 60. Breitengrades südlicher Breite liegen, fallen sie nicht in den Anwendungsbereich des ...

???????????

????????????(?: South Georgia and the South Sandwich Islands,??? SGSSI)????????????????????
 ?????????????????????,????????????????????
 ?????????????????,????????????,????3592? ...



Contact Us

For catalog requests, pricing, or partnerships, please visit:
<https://ian-solar.co.za>