

Solar Energy South Africa

Storing lithium battery Nauru



Overview

☐☐. Storing your lithium batteries properly keeps them performing well and avoids safety risks. When you use tips like keeping the batteries at the right temperature, using the right container, looking out for battery damage (monitoring), and keeping them partially charged, you can use your lithium batteries for a long time. Following the guidelines of the manufacturers can avoid the risk .

☐☐. Storing your lithium batteries properly keeps them performing well and avoids safety risks. When you use tips like keeping the batteries at the right temperature, using the right container, looking out for battery damage (monitoring), and keeping them partially charged, you can use your lithium batteries for a long time. Following the guidelines of the manufacturers can avoid the risk .

For short-term lithium battery storage, keep the battery in a cool, dry place away from direct sunlight and corrosive gases. Store it at 40% to 60% charge, ideally between 5°C and 15°C (41°F to 59°F).

How should I store a lithium battery?

To store a lithium battery properly, follow these guidelines: Avoid storing the battery in extreme temperatures. Keep it in a dry and cool place. Store the battery in a partially charged state. Aim for around 40% to 50% charge.

Humidity: Low humidity levels are preferable for lithium battery storage. Aim for humidity levels below 80% to prevent moisture-related damage.

4. Fire Safety: Choose a storage location away from flammable materials and potential ignition sources. In case of emergencies, having fire extinguishers readily available is a prudent safety measure. .

By choosing a suitable storage location, preparing the batteries correctly, using appropriate storage containers, and performing regular inspection and maintenance, you can effectively store lithium batteries without compromising their performance or risking potential hazards.

Storing lithium battery Nauru



nauru lithium for energy storage batteries

A recent push to include lithium ion battery storage in NFPA 13 prompted a study conducted by the Fire Protection Research Foundation Feedback >> Fire protection for Lithium-ion battery energy storage systems

which energy storage cell should be used nauru or iron lithium

which energy storage cell should be used nauru or iron lithium . which energy storage cell should be used nauru or iron lithium . Lithium Ion Batteries: Are They The Best Energy Storage For Solar? Grid scale battery storage promises to eliminate the need for the peaker plants, and multiple battery projects have been deployed around the



nauru lithium for energy storage batteries

nauru lithium for energy storage batteries. Better batteries: the hunt for an energy storage . A recent push to include lithium ion battery storage in NFPA 13 prompted a study conducted by the Fire Protection Research Foundation (Feedback >> Fire protection for Lithium-ion battery energy storage systems.



Is Storing Lithium-ion Batteries in a Garage Safe?

Detached Garages and Lithium-ion battery Storage . If you have a detached garage, then it might not be a great idea to store your lithium-ion batteries there, especially if you live in a cold climate. Why? Well, most detached garages are neither heated nor cooled. This means that, in the winter months, your batteries will likely be exposed to



How Long Do Lithium Batteries Last in Storage?

Temperature: Temperature is a critical factor in lithium battery storage. High temperatures can accelerate the degradation of battery chemistry, while extremely low temperatures can reduce battery performance. It is best to store lithium batteries in a cool environment, ideally between 15°C and 25°C (59°F and 77°F).

How long can a Lithium Ion battery be stored at 100% before

Leaving a lithium ion battery at 100% for a prolonged period of time degrades the battery faster right? So if I ordered an electronic from Japan that took a month to arrive, and the seller shipped the item with 100% charge, would this increase the degradation of the battery since it would be sitting at 100% for an entire month?



Are all energy storage stations nauru lithium

nauru lithium will not be used for energy storage power stations . nauru lithium will not be used

for energy storage power stations . Key Challenges for Grid-Scale Lithium-Ion Battery Energy Storage . As the US used 92.9 quads of primary energy in 2020, this is only 2 weeks'''' worth of storage, and not quite sufficient to heat Page 2/4



Nauru lithium battery energy storage prospects

A high-energy-density long-cycle lithium-sulfur battery enabled . The lithium-sulfur (Li-S) chemistry may promise ultrahigh theoretical energy density beyond the reach of the current lithium-ion chemistry and represent an attractive energy storage technology for electric vehicles (EVs). 1-5 There is a consensus between academia and industry that high specific energy and ...



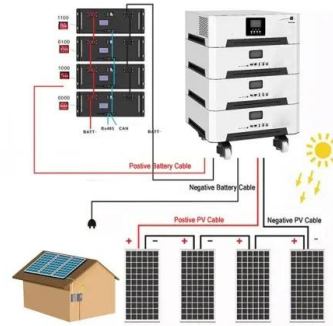
How Do You Store Lithium Batteries in a Warehouse?

To store lithium batteries in a warehouse, keep them in a cool, dry environment with temperatures between 32°F and 77°F (0°C to 25°C). Ensure they are charged to about 40-60% capacity, and store them upright in a secure location away from direct sunlight and moisture. Regularly inspect the batteries for any signs of damage or swelling. Best Practices for Storing

[Lithium-ion Battery Use and Storage](#)

with these batteries are infrequent, but the hazards associated with lithium-ion battery cells,

which combine flammable electrolyte and significant stored energy, can lead to a fire or explosion from a single-point failure. These hazards need to be understood in ...



energy storage lithium iron phosphate battery and nauru lithium battery

?Note: the product does not include shipping costs. Please contact us to determine the shipping method and price. Product Features & Highlights ?51.2V 250Ah 12800Wh FeLiPO4 Lithium Iron Phosphate Battery ?Grade A battery cells 3000-4500 times cycles ?250A BMS & Stainless steel metal Frame.

[Linping nauru lithium energy storage](#)

Can lithium-ion battery storage stabilize wind/solar & nuclear? In sum, the actionable solution appears to be ?8 h of LIB storage stabilizing wind/solar + nuclear with heat storage, with the legacy fossil fuel systems as backup power (Figure 1).



Is It Safe to Store Lithium Batteries In the House?

Avoid deep discharge (0%): Storing a lithium-ion battery at a very low charge can cause it to enter a deep discharge state, potentially rendering it unusable. Store In Insulated Containers If storing

batteries in an unheated ...



Lithium energy storage banned in nauru

As the photovoltaic (PV) industry continues to evolve, advancements in Lithium energy storage banned in nauru have become critical to optimizing the utilization of renewable energy sources. From innovative battery technologies to intelligent energy management systems, these solutions are transforming the way we store and distribute solar



Dell Laptop Battery

One type of lithium-ion battery is the lithium-ion polymer battery. Lithium-ion polymer batteries have increased in popularity in recent years and have become standard in the electronics industry due to customer preferences for a slim form factor (especially with newer ultrathin laptops) and long battery life. When storing for more than 4

Standard of Care at Warehouses Storing Lithium-ion ...

4. In general, store battery packs in an area separated from the remainder of the warehouse.
5. Store battery packs in original packing, unless

packing has been opened for order picking. 6. Do not stack pallets of Lithium-ion batteries, other than in a racking system. 7.

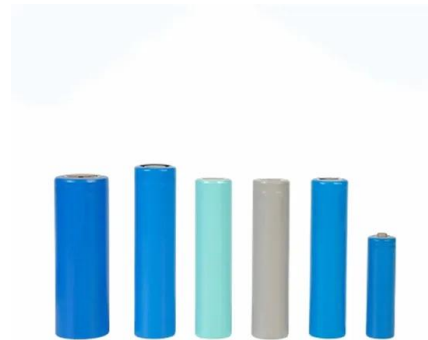


How to heat a shed for lithium battery storage? : r/SolarDIY

Lead acid also loses storage capacity when cold: that's why we bring car batteries inside overnight in winter or you won't have juice to start the car in the morning. Storing them, and drawing power from lithium is fine (the latter up to -20C, the former even lower). Charging them below 0C should very much be avoided.

how much does a 10 kwh nauru lithium energy storage battery ...

how much does a 10 kwh nauru lithium energy storage battery cost - Suppliers/Manufacturers. Home Battery Storage WITHOUT Solar . This video looks at the benefits and costs of having a home battery without any accompanying solar. Gary Does Solar Patreon: Feedback >>



How To Store A Lithium Battery , Storables

Whether it's due to travel restrictions, seasonal usage, or simply having a backup battery, understanding how to store a lithium battery properly is crucial to maintaining its longevity

and safety. In this article, we will delve into ...



Storing Lithium Batteries : Safety Tips You Need to Know

?? . Storing your lithium batteries properly keeps them performing well and avoids safety risks. When you use tips like keeping the batteries at the right temperature, using the right container, looking out for battery damage (monitoring), and keeping them partially charged, you can use ...



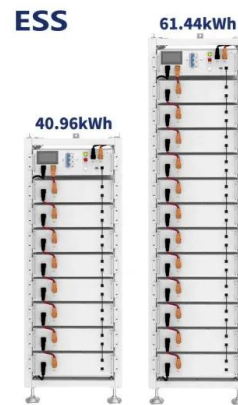
Nauru lithium-ion energy storage battery

The energy-storage frontier: Lithium-ion batteries and beyond. The first step on the road to today's Li-ion battery was the discovery of a new class of cathode materials, layered transition-metal oxides, such as Li_xCoO_2 , reported in 1980 by Goodenough and collaborators. 35 These layered materials intercalate Li at voltages in excess of 4 V, delivering higher voltage and ...

Safely Storing Lithium-Ion Batteries: Why Do You Need Specialist Storage?

Lithium-ion batteries can be dangerous when not stored correctly, so it's important to understand the risks involved and what correct storage looks

like. A shelved battery is not necessarily a safe battery. In particular, lithium-ion cells can catch fire or even explode if they're damaged or exposed to high temperatures during storage. "As well as the increasing ...



paramaribo nauru lithium energy storage module price

16S1P 218AH lithium ion battery module for solar energy storage. 16S1P 218AH lithium ion battery module for solar energy storageSize: W305*H130*L705mmCell weight: 59.2kgCycle life:>=2000CyclesProduct link: [More ...](#) Feedback >>

How to Store Lithium Batteries Safely: A Complete Guide

Temperature is a critical aspect of lithium battery storage. These batteries are sensitive to extreme conditions, both hot and cold. The ideal temperature range for lithium battery storage is 20°C to 25°C (68°F to 77°F). This temperature range helps to maintain the battery's chemical stability and avoids rapid aging.



What Does BMS Mean in Lithium Batteries?

2 ???· Choosing the right lithium battery with BMS can be overwhelming, but by understanding a few key factors, you can make an informed decision: Application Type: Whether you need a lithium-ion battery for solar storage, an electric vehicle, or a home backup power system,

different applications have different requirements.



[How to store lithium based batteries](#)

The best way to do this is to rest the battery at room temperature for at least an hour and a half. Lithium-Ion voltage ranges (image from Microchip Technology Inc) If a Lithium Ion battery is heavily discharged an attempt to ...



Contact Us

For catalog requests, pricing, or partnerships, please visit:
<https://ian-solar.co.za>