

Solar Energy South Africa

Svalbard and Jan Mayen electrician fotovoltaice



Overview

What is the difference between Svalbard and Jan Mayen?

Svalbard is an archipelago in the Arctic Ocean under the sovereignty of Norway, but is subject to the special status granted by the Svalbard Treaty. Jan Mayen is a remote island in the Arctic Ocean; it has no permanent population and is administered by the County Governor of Nordland.

What is a Svalbard & Jan Mayen islands?

The United Nations Statistics Division also uses this code, but has named it the Svalbard and Jan Mayen Islands. Svalbard is an archipelago in the Arctic Ocean under the sovereignty of Norway, but is subject to the special status granted by the Svalbard Treaty.

What is Svalbard & Jan Mayen in ISO 3166-2?

ISO 3166-2:SJ is the entry for Svalbard and Jan Mayen in ISO 3166-2, a system for assigning codes to subnational administrative divisions. However, further subdivision for Svalbard and Jan Mayen occurs under Norway's entry, ISO 3166-2:NO:.

Who governs Svalbard?

The archipelago is administered by the Governor of Svalbard, which is subordinate to the Norwegian Ministry of Justice and Public Security. Unlike the rest of Norway (including Jan Mayen), Svalbard is a free economic zone and a demilitarized zone, and is not part of the Schengen Area nor the European Economic Area.

When did Svalbard become part of Norway?

The Svalbard Treaty of 1920 recognizes Norwegian sovereignty, and the 1925 Svalbard Act made Svalbard a full part of the Kingdom of Norway.

wages on the job Auto Electrician, overview of salaries in Svalbard and Jan Mayen and abroad. Svalbard and Jan Mayen. Paylab for business; Salary report Pro worldwide; Our company About us Contact Our partners Methodology Newsroom Blog ,



[Svalbard and Jan Mayen](#)

Svalbard and Jan Mayen (Norwegian: Svalbard og Jan Mayen, ISO 3166-1 alpha-2: SJ, ISO 3166-1 alpha-3: SJM, ISO 3166-1 numeric: 744) is a statistical designation defined by ISO 3166-1 for a collective grouping of two remote jurisdictions of Norway: Svalbard and Jan Mayen. While the two are combined

[Salaries in Svalbard and Jan Mayen](#)

The salary range of employees working in Svalbard and Jan Mayen is, by default, in the range of 12,035.00 NOK (low salaries, Electrician Electrical & Power Engineering Age group. 35-44. Work experience: 6 to 10 years. Region. Svalbard and Jan Mayen. Education: Secondary without school-leaving examination



[Jan Mayen , Albatros Expeditions](#)

Jan Mayen is a narrow volcanic island, divided into two distinct regions: Nord-Jan in the northeast and Sør-Jan in the southwest. These two regions are connected by a 2.5-kilometer wide isthmus. The island covers an area of 373 square kilometers, and its landscape is dominated by the towering Beerenberg volcano, which stands at 2,277 meters

[Jan Mayen - Wikipedia](#)

Jan Mayen ist eine 373 km² große Insel etwa 550 km nordöstlich von Island und rund 500 km östlich von Grönland [1] an der Grenze zwischen der Grönlandsee und dem Europäischen Nordmeer. Sie gehört politisch zu Norwegen, ist aber keiner der norwegischen Provinzen zugeordnet. Die Insel wird von der Provinz Nordland verwaltet; der zuständige Verwaltungssitz ...



Svalbard Næringsforening , Longyearbyen Svalbard ...

Svalbard Næringsforening, Longyearbyen. 729 likes · 7 talking about this. Verdens nordligste næringsforening og talerør - For et aktivt og bærekraftig næringsliv på Svalbard. The world's

[Svalbard and Jan Mayen](#)

Jan Mayen is a volcanic island in the Arctic Ocean located at the border of the Norwegian Sea and the Greenland Sea. The single island covers an area of 377 square kilometres (146 sq mi) and is dominated by the 2,277-metre (7,470 ft) tall Beerenberg volcano. The island's only population is a combined military and meteorological outpost that operates a LORAN-C ...



Photovoltaic and electrical installation testers

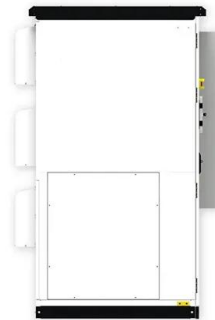
Photovoltaic electrical installation safety testing is a special area of electrical installation safety testing as it also entails tests and measurements on DC systems, which are relatively uncommon



in most domestic, commercial and to a certain extent industrial environments. There is also the addition of photovoltaic-specific tests that are

[Welcome to the High Arctic of Svalbard!](#)

Svalbard is large and diverse, boasting nature which is surprisingly rich and extremely varied. At the same time, we have personal experiences of climate change and the threats it poses here in the Arctic, and we are worried about the future. Life in Longyearbyen may be perceived both as different and perhaps extreme, but for those of us



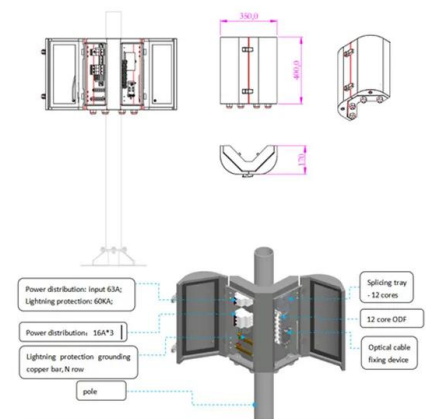
List of mammals of Svalbard and Jan Mayen

This is a list of mammal species recorded in Svalbard and Jan Mayen. There are seventeen mammal species in Svalbard and Jan Mayen, of which three are endangered and three are vulnerable. [1] The following tags are used to highlight each species' conservation status as assessed by the International Union for Conservation of Nature: EX:

[Top places in Svalbard and Jan Mayen](#)

Svalbard and Jan Mayen islands guarantee you sun, magical beaches, and unique cultural heritage. There is hardly a place less traveled by

tourists. The Berenberg peak dominates the island's panorama - it is the world's northernmost active surface volcano. Jan Mayen is uninhabited. The only inhabitants of the island are the Norwegian weather station staff, to ...



Svalbard i Jan Mayen - Wikipedia, wolna encyklopedia

Svalbard i Jan Mayen (norw. Svalbard og Jan Mayen, ISO 3166-1 alfa-2: SJ, ISO 3166-1 alfa-3: SJM, ISO 3166-1 numeryczny: 744) jest nazwa statystycznej jednostki zdefiniowana w ISO 3166-1. Składa się z dwóch norweskich terytoriów z niezależną jurysdykcją: Svalbard i Jan Mayen. Terytoria te są połączone dla celów kategoryzacji Międzynarodowej Organizacji ...

[Jan Mayen , Svalbard und Spitzbergen](#)

Jan Mayen. Die norwegische Insel Jan Mayen wird oft in einem Atemzug mit Spitzbergen und Svalbard genannt. In der Tat wurde die Insel bis Ende 1994 vom Sysselemanden in Longyearbyen verwaltet, aber seitdem geschieht das vom Festland aus. Die ...



[Svalbard und Jan Mayen](#)

Im norwegischen Sprachgebrauch heißt die Inselgruppe Svalbard („kühle Küste“). Jan Mayen ist eine 373 km² große Insel ca. 650 km nordöstlich von Island in der Grönlandsee und ist politisch gesehen ein integraler Teil Norwegens, gehört jedoch zu keiner der norwegischen

Provincen. Die Inselgruppe Spitzbergen liegt nördlich des



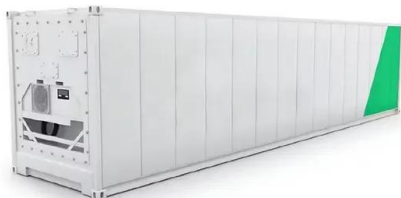
???????

???????(???: Svalbard og Jan Mayen, ISO 3166-1
 ??????:SJ, ISO 3166-1 ??????:SJM, ISO 3166-1 ??????
 ? :744)????????????????????,????????????????????????????
 ? ???



[Svalbard and Jan Mayen](#)

Svalbard and Jan Mayen offer an unparalleled encounter with the Arctic's untamed beauty - a journey through snow-capped mountains, icy fjords, and a world of rare wildlife. These lands invite adventurers to embark on an Arctic expedition, witnessing the wonders of nature in its purest form, leaving an indelible mark of awe and reverence for the



[Svalbard and Jan Mayen](#)

The standard voltage on Svalbard and Jan Mayen (230 V) matches the voltage level your devices typically operate at in the United Kingdom. You don't need a voltage converter on Svalbard and Jan Mayen. 230 V. 50 Hz. 230 V. 50 Hz. To be sure, check the label on your devices. Some devices never need a converter.

12.8V 100Ah



Contact Us

For catalog requests, pricing, or partnerships, please visit:
<https://ian-solar.co.za>