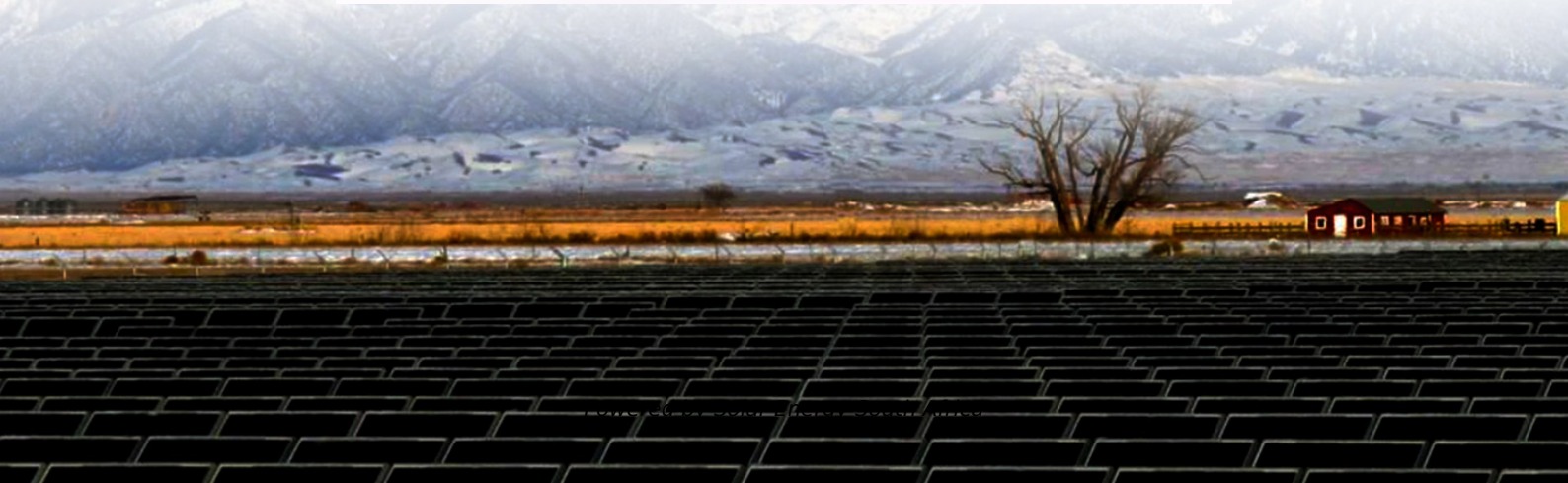


## Solar Energy South Africa

# The length of the positive and negative poles of the photovoltaic panel cable



## The length of the positive and negative poles of the photovoltaic panel



### Solar Panel Wiring Basics: Complete Guide & Tips to ...

Solar panels feature positive and negative terminals. Wiring solar panels in series means wiring the positive terminal of a module to the negative of the following, and so on for the whole string. This wiring type ...

### Solar Cable Size Selection Guide For PV Plants

These cables have proper connectors and are integrated into photovoltaic solar panels. Positive and negative cables are linked to the production box or directly to the solar inverter through appropriate extension ...



### The Ultimate Guide to Understanding and Creating a ...

Ensure that each panel, cable, and connection point is clearly identified for easy troubleshooting and maintenance. Choose the right wire gauge: Selecting the correct wire gauge is essential to minimize power losses and ensure the safe ...

### Balance of system

For safety reasons, the positive and negative cables are laid separately. If the length of the cables is not sufficient, then special extension

cables will be used. Depending on the modules' power output, PV cables with cross-sectional ...

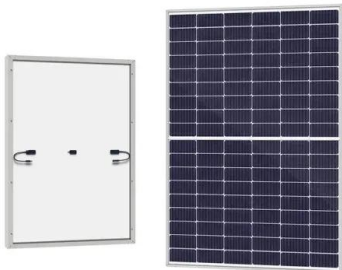
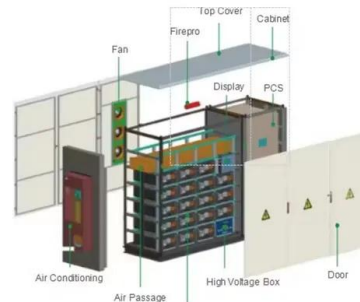


## Identify Positive Solar Panel Connectors , PV ...

Expose the solar panel to sunlight: Ensure the solar panel is facing the sun and producing electricity during the test.. Connect the probes: Touch the red probe to the suspected positive connector and the black probe ...

## The Complete Guide for Solar Panel Connectors

By using a 4-in-1 MC4 combiner you can connect up to 4 solar panels (or strings of panels) in parallel. This is done by connecting all the positive leads from the 4 PV modules to a single MC4 combiner. Then, the negative ...



## [Solar Panel Positive and Negative \(Diode\)](#)

Serving as a larger collector cable, the main DC cable connects the positive and negative cables from the generator junction box to the central inverter. It can be a single-core or two-core cable. Single-core cables ...

## How to Correctly Install MC4 Connectors for Solar Panels

Simply put, Parallel is the same as when you are trying to jump-start a car - positive to positive, negative to negative. That is a parallel connection. The nominal voltage remains at 12V. Connecting Solar Panels in Series refers to 2 ...



## How to Check Solar Panel Polarity (Reverses + Fixes)

In other words, you have correctly identified "positive" and "negative" polarity. Solar panel and Li-ion battery generation system for home. Renewable energy concept. Simplified diagram of an off-grid system. it's ...



## The Ultimate Guide to MC4 Connectors , Solar Panel ...

Connect the positive (+) terminal of one solar panel to the negative (-) terminal of the adjacent panel using a cable with male and female MC4 connectors. You can check our last blog on how to identify the positive ...



## A Comprehensive Guide to Combiner Boxes in ...

In a photovoltaic system, a combiner box acts as a central hub that consolidates and manages the direct current (DC) output of multiple solar panels. Its main purpose is to simplify the wiring structure, enhance system security and ...



## Contact Us

---

For catalog requests, pricing, or partnerships, please visit:  
<https://ian-solar.co.za>