

Solar Energy South Africa

What is a photovoltaic combiner box diode



Overview

What is a combiner box in a photovoltaic system?

In a photovoltaic system, a combiner box acts as a central hub that consolidates and manages the direct current (DC) output of multiple solar panels. Its main purpose is to simplify the wiring structure, enhance system security and simplify maintenance procedures.

What is a diode in a combiner box?

In a combiner box, diodes serve different purposes than those in component junction boxes. Diodes in component junction boxes primarily provide continuous flow channels when battery cells are covered while diodes in combiner boxes mainly prevent loop currents between strings.

How does a solar combiner box work?

Inside the solar combiner box, the direct current is combined and distributed through controllers and DC distribution cabinets. It is finally converted into alternating current by a PV inverter for grid connection or supplying other AC loads. Therefore, the electricity handled by the solar combiner box is direct current, not alternating current.

What are solar combiner boxes made of?

The PV systems combiner boxes are made from polycarbonate, stainless steel, galvanized steel or aluminum. Safety is a vital components in solar combiner box design. It should protect solar cables or connections from bad weather conditions. Depending on where you intend to install the combiner box, it should comply with:.

What is a 4 string solar combiner box?

In solar systems, the word string refers to a group solar panels wired in series. Of course the aim here is to produce a specific voltage. So, whether you talk of 4, 2 or 24 string solar combiner box - it simply refers to the group of solar

panels. Therefore, in a 4 string solar combine box, we will have both positive and negative cables.

What is a solar panel combiner?

Solar panel combiner is an enclosure that brings different outputs of solar panels into a single output. It is important to note: You will find these accessories in the solar PV systems. Occasionally, they can be used in smaller systems to simplify troubleshooting, wiring, and monitoring of the system.

What is a photovoltaic combiner box diode

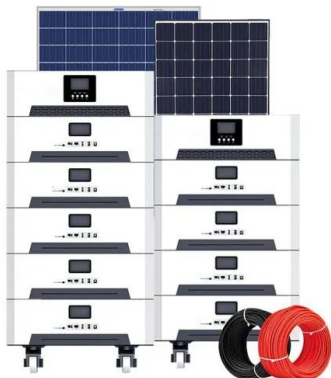


Is a Solar Combiner Box Necessary (How to Choose)

A solar combiner box is an electrical device that combines the output of multiple solar panels into a single DC (direct current) circuit. It is used in PV (photovoltaic) systems, and usually contains fuses or circuit breakers to ...

How to Select the Right PV Combiner Box: Key ...

Generally, the input power parameter of the PV combiner box should be slightly greater than the total installed capacity of the PV power station to ensure system reliability and safety. 2 put Voltage Parameters. The input ...



What You Should Know about PV Combiner Box

A PV combiner box is the key to housing a joint connection between various panels and the entire system's inverter. Think of this box as the heart of a seamless solar energy solution. What is the Purpose of the PV ...

What is a PV Combiner Box?-Most detailed ...

A PV combiner box, also known simply as a combiner box, is an essential component in photovoltaic (PV) solar power systems. It serves

as a central point where the electrical outputs from multiple solar panel strings are ...



What is a PV Combiner Box?

In this blog post, we'll delve into the pivotal role played by a critical component of solar power systems - the PV combiner box. Discover how this compact box optimizes energy harvesting and ensures the smooth operation of your solar ...



A Comprehensive Guide to Combiner Boxes in ...

What Are Combiner Boxes. In a photovoltaic system, a combiner box acts as a central hub that consolidates and manages the direct current (DC) output of multiple solar panels. Its main purpose is to simplify the wiring structure, ...



What is a Combiner Box -A Complete Guide

The combiner box merges the electrical currents from multiple solar panel strings. This allows for a more straightforward connection to the inverter. Simply it means it convert the direct current to alternating current to ...

Contact Us

For catalog requests, pricing, or partnerships, please visit:
<https://ian-solar.co.za>