

Solar Energy South Africa

What is the anti-pullout effect of photovoltaic bracket



Overview

Can a cable-supported PV system reduce vertical displacement?

Recently, the authors (He et al., 2020) proposed a new cable-supported PV system using three cables and four triangle brackets to form an inverted arch to reduce the vertical displacement of the PV modules.

How safe are flexible PV brackets under extreme operating conditions?

Safety Analysis under Extreme Operating Conditions For flexible PV brackets, the allowable deflection value adopted in current engineering practice is 1/100 of the span length . To ensure the safety of PV modules under extreme static conditions, a detailed analysis of a series of extreme scenarios will be conducted.

Can a cable-supported PV system reduce wind-induced vibration?

Recently, the authors (He et al., 2020) proposed a new cable-supported PV system by adding an additional cable and several triangle brackets to form an inverted arch and reduce the deflection of the PV modules and studied the wind-induced vibration and its suppression through a series of wind tunnel tests.

What are the characteristics of a cable-supported photovoltaic system?

Long span, light weight, strong load capacity, and adaptability to complex terrains. The nonlinear stiffness of the new cable-supported photovoltaic system is revealed. The failure mode of the new structure is discussed in detail. Dynamic characteristics and bearing capacity of the new structure are investigated.

What is the inflection point of a cable-supported PV system?

When the upward vertical displacement is less than 0.0639 m, the force first counteracts the self-weight of the cables and PV modules. Therefore, there is an inflection point at 0.0639 m. For the new cable-supported PV system, the

lateral stiffness is much higher than the vertical stiffness.

What is cable-supported photovoltaic (PV)?

Cable-supported photovoltaic (PV) modules have been proposed to replace traditional beam-supported PV modules. The new system uses suspension cables to bear the loads of the PV modules and therefore has the characteristics of a long span, light weight, strong load capacity, and adaptability to complex terrains.

What is the anti-pullout effect of photovoltaic bracket

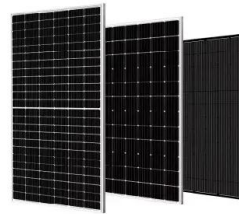


Analysis of Wind Loading on Photovoltaic Panels Mounting Brackets

This paper aims to analyze the wind flow in a photovoltaic system installed on a flat roof and verify the structural behavior of the photovoltaic panels mounting brackets. The study is performed ...

Photovoltaic Bracket _Nanjing Chinylion Metal Products Co., Ltd.

Photovoltaic Bracket -Nanjing Chinylion Metal Products Co., Ltd.-Photovoltaic bracket is mainly applicable to distributed power stations, rooftop power stations, household, commercial and ...



Large-Scale Ground Photovoltaic Bracket Selection

...

GS-style photovoltaic brackets, which feature a design similar to satellite receiving antennas' "dish" supports, include a north-south horizontal axis and an east-west inclined axis. This innovative structure enables adjustments to be ...

New bracket and motion control system for distributed

photovoltaic

In view of the existing solar panel blackout, affecting the ecological environment, unreasonable spatial distribution, low power generation efficiency, high failure rate, difficult to ...



Contact Us

For catalog requests, pricing, or partnerships, please visit:
<https://ian-solar.co.za>