

## Solar Energy South Africa

# What is the width of the original photovoltaic glass panel



## Overview

---

Residential solar panels are rectangular and measure approximately 2-meters tall by 1-meter wide. They are typically between 3 and 5cm deep, although all dimensions vary by brand. What is a photovoltaic (PV) solar panel?

This solar panel is a photovoltaic (PV) panel that offers several advantages over the standard solar panel size, making them a good alternative. Some of the benefits of this solar panel type include: Sleek weight and flexibility - because of its weight, this solar panel is easier to install in different locations.

What are the dimensions of a solar panel?

The cell layout of a 60-cell solar panel is 6x—10 (6 columns and 10 rows). The cell layout of a 72-cell solar panel is 6x—12 (6 columns and 12 rows). Standard Solar Panel Dimensions in mm A solar panel's wattage and cell design determine its overall physical dimensions and mass. In general, the solar panel dimensions in mm are 156 mm x— 156 mm.

Why are solar panels packaged with glass?

Therefore, solar cells are usually packaged with solar glass through EVA and back sheet. The function of solar glass in solar panels is to protect solar panels from water vapor erosion, block oxygen to prevent oxidation, so that solar panels can withstand high and low temperature, have good insulation and aging resistance.

How to choose PV glass for solar panels?

When selecting PV glass for solar panels, several key specifications need to be considered to ensure optimal performance and compatibility with project requirements. The thickness of PV glass plays a crucial role in its structural integrity and performance: Range: Common thicknesses range from 3.2mm to 6mm for individual glass panes.

What type of glass is used in solar panels?

The type of solar glass directly influences the amount of solar radiation that is being transmitted. To ensure high solar energy transmittance, glass with low iron oxide is typically used in solar panel manufacturing. Solar panels are made of tempered glass, which is sometimes called toughened glass.

How to choose a solar panel cover glass?

The cover glass needs to offer low reflection, high transmissivity, and high strength. Crystalline silicon solar panels Typically a 3.2mm thick piece of solar glass is used. The solar glass has a rough surface. This is needed, because, during the lamination process, EVA needs to adhere to the glass.

## What is the width of the original photovoltaic glass panel

---



### Solar Photovoltaic Panel Sizes: A Complete Guide

The physical dimensions of most standard commercial panels are usually around 77 by 39 inches, with a thickness of around 1.5 inches. Most residential solar panel dimensions are standardised to around 60 cells and are roughly 65 by ...

### Photovoltaic glaze: the future of sustainable ...

King's Cross railway station is another good example of the photovoltaic glaze's applications. The roofing, renewed in 2014, has glass-glass BIPV laminates, making it transparent. Also, the renovation of the Appleton ...



### [Solar Panel Sizes, Dimensions & Weight](#)

How solar panel size and dimensions affects the system design. When it comes to designing an optimal solar system the solar panel size plays a key role: The height and width of each panel will determine how many solar ...

### What Is the Average Size of a Solar Panel?

Constituted of glass and heavy frames, each panel may vary in its weight. Most common

panels may weigh up to 40 pounds or even more, depending on the requirements. So a bigger solar panel will weigh more than usual and need a ...



**12.8V 200Ah**

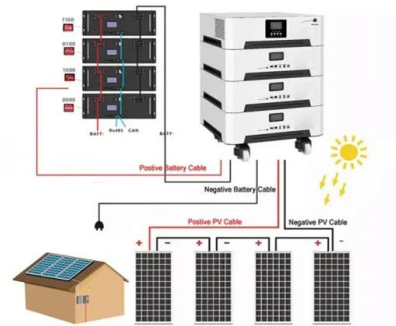


## Solar Panel Dimensions and Sizes: Complete Guide

Standard Solar Panel Size. How big is a solar panel? There are three main sizes of solar panels to know: 60-cell, 72-cell, and 96-cell. For commercial and residential solar panels, the 60-cell and 72-cell solar panels size are most ...

## Solar Glass: applications and comparison to Light-Trapping

Standard residential solar panels contain 60 solar cells (or 120 half-cut solar cells) and typically generate anywhere from 350W to 500W of electricity. The size of these panels can range from 1.6m tall x 1.0m wide, to ...



## [Solar Panel Sizes & Dimensions UK \(2024\)](#)

Many solar panel companies make small solar panels designed specifically for small roofs. You can also opt for high-efficiency solar panels that have conversion rates as high as 23% (compared to the industry average of ...

## Contact Us

---

For catalog requests, pricing, or partnerships, please visit:  
<https://ian-solar.co.za>